

# ***Pro'sKit***<sup>®</sup>

## **FB-1688 FIBER CLEAVER**

Thanks for buying PRO'SKIT FB-1688 Fiber Cleaver. Please read these instructions carefully before using the product.

This product has been designed and manufactured to assure personal safety.

Improper use can result in bodily injury and serious damage to fiber cleaver.

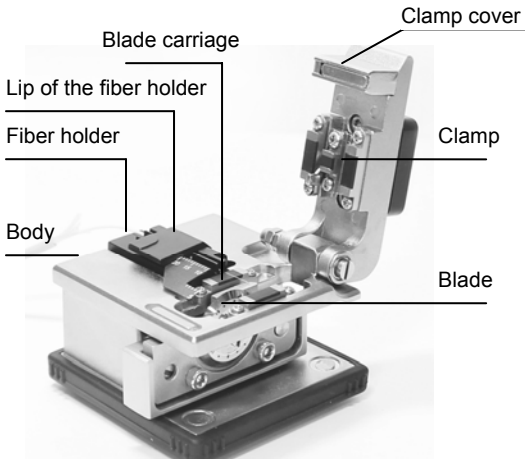
Please read and observe all warning instructions given in this operation annual.

1. Do not disassemble or lubricate any parts of cleaver. Doing so could cause serious damage to the cleaver.
2. The FB-1688 is a precision tool. Do not impact the cleaver by hitting or dropping it. Doing so may cause personal injury and loss of cleaving performance.
3. Glass fiber fragments are extremely sharp. Handle with care. Wear safety glasses at all times during cleaving operation for protection from glass fiber.
4. Dispose of glass fiber fragments properly.
5. The blade of cleaver is extremely sharp. Do not touch it with bare hands.
6. Do not impact the Clamp Cover. Doing so could cause damage to cleaver and loss of cleaver performance.
7. If cleaver is damaged or problem occurs, please contact our maintenance service center.

## **SPECIFICATION**

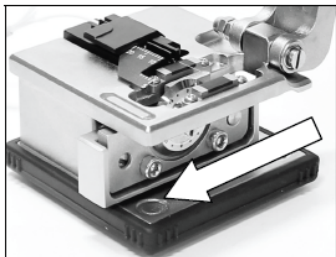
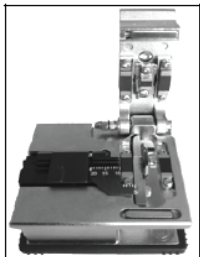
Cladding Diameter	125 $\mu\text{m}$
Fiber Count Coating Diameter	Single fiber 250 $\mu\text{m}$ & 900 $\mu\text{m}$
Cleave length	5-20mm
Dimensions	62 x 60 x 56 mm
Cleaver Blade (5FB-1688-BLAD)	16 points

## **STRUCTURE**



## OPERATING PROCEDURE

1. Open the Clamp Cover and lid of the fiber holder.  
Please make sure the blade carriage is in the forward position.



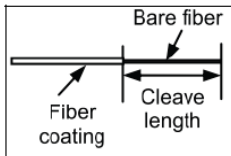
2. Insert the fiber cable into the correct groove depending on the fiber coating diameter.



3. Close the lid of the fiber holder and clamp cover.
4. Slide the blade carriage to the rear side of the cleaver.  
The fiber will be cleaved.



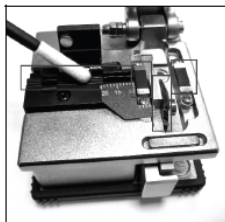
5. Open the Clamp Cover. Open the lid of fiber holder and lift out the newly cleaved fiber. Lift the off-cut and dispose of it properly.



## **CLEAN**

To keep excellent cleaving quality, please clean the fiber cleaver after use.

USE a cotton swab moistened with isopropyl alcohol to clean the blade edge, the rubber pad of the clamp and anvil, the fiber holder and the grooves.



## CAUTION

- Dust on the blade edge or clamp might cause loss of cleaving performance or poor quality of fiber end face.
- Do not clean them with any other kind of chemicals.
- If the Clamp Cover is closed leaving an off-cut fiber on the clamp, the rubber pad of clamp will have a trace of fiber, causing loss of cleaving performance or poor quality of fiber end face.

## BLADE POSITION CHANGE

As the number of the cleaving increases, a symptom that fiber cannot be cleaved or cracks will occur. If such symptom continues to appear, the blade position is worn out. Rotate the blade according to the following procedures and use a new blade position.

[Reference] approximately 1,000 fibers per position

1. Loosen the blade set screw. (fig.1)
2. Rotate the blade to the next position by pressing its side or edge with cotton swab.

Rotate the blade in the direction indicated by the arrow. (fig.2)

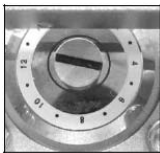


Fig.1

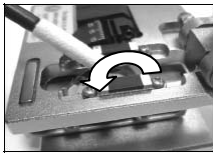


Fig.2

## CAUTION

- Do not rotate the blade with hands.
  - Do not rotate the blade with metallic tweezers. Doing so may damage the blade.
3. Tighten the blade set screw.
  4. Try and cleave the fiber. Perform a visual check of the fiber end face with splicer. If the fiber end face is poor, adjust the blade height. (Refer to “Blade height adjustment”)

## **BLADE HEIGHT ADJUSTMENT**

1. Loosen the 2 Hex Screws with the attached hex key. (Fig3)
2. Turn the blade height adjustment slot screw (Fig4)
3. Tighten the 2 Hex Screws with the attached hex key (Fig5).
4. Cut fiber to test the performance of cleaver, if not good quality, adjust the blade again until optimized.

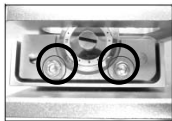


Fig 3



Fig4



Fig5

## **BLADE REPLACEMENT**

1. Unscrew the blade set screw. (Fig6)
2. Remove the blade with tweezers (Fig.7).

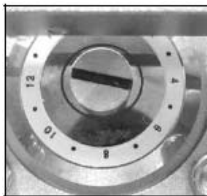


Fig.6



Fig.7

### **⚠ CAUTION**

The edge of a blade is manufactured precisely. If the edge is hit against metallic object, it will crack, resulting in poor cleaving performance. Handle with care.

When using metallic tweezers, be careful not to damage the blade.

Do not touch the blade with hands. Use gloves.

Dispose of old blade properly.

3. Insert a new blade in the cleaver so that the number “0” is in the top position. The hole of the blade should be aligned with the hole of the blade receptacle.
4. Tighten the blade setscrew securely.
5. Adjust the blade height, referring to “ Blade height adjustment”

## **TROUBLESHOOTING**

If the cleaving problems occur, the following are possible are causes.

<b>Situation</b>	<b>Solution</b>
The fiber is placed obliquely in cleaver.	Make sure that the fiber is placed straight in the cleaver
The blade position is too high.	Adjust the blade height.
Dust or dirt remains on the clamp.	Clean the clamp
Dust or dirt remains on the blade.	Clean the blade.
Dust or dirt remains on the fiber.	Remove the fiber coating and clean the blade fiber again.

# ***Pro'sKit***<sup>®</sup>



PROKIT'S INDUSTRIES CO., LTD.

<http://www.prokits.com.tw>

E-mail: [pk@mail.prokits.com.tw](mailto:pk@mail.prokits.com.tw)

©2013 Copyright by Prokit's Industries Co., Ltd(C).



# Pro'sKit®

## FB-1688 使用說明

感謝您購買和使用 PRO'SKIT FB-1688 光纖切斷刀，使用前請仔細閱讀說明書，閱讀後請妥善保存，以備查閱。

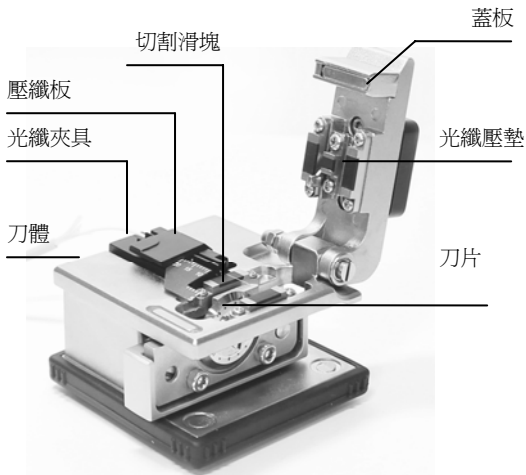
### 使用方法和安全操作規則

1. 請不要自行拆解本產品，以免造成產品損壞
2. 切勿猛烈撞擊切割刀或跌落，以免成產品損壞或是影響切割的精度
3. 使用時請戴手套以避免被刀片或是光纖的利角割傷
3. 切勿弄濕切割刀。
4. 切勿把切割刀放在潮濕或佈滿灰塵的地方。
5. 常溫下保存以免高溫引起變形。
6. 裸光纖留長約 12mm。

### 規格

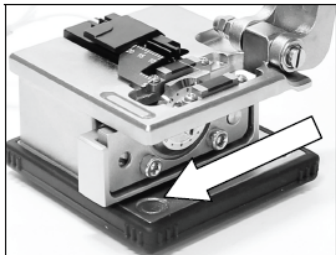
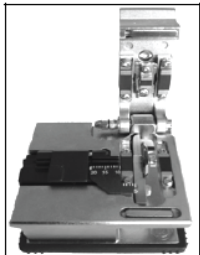
裸光纖尺寸	125 $\mu$ m
光纖披覆外徑	單芯 250 $\mu$ m & 900 $\mu$ m
光纖切割長度	5-20mm
產品尺寸	62 x 60 x 56 mm
切割刀片 (5FB-1688-BLAD)	16 點

## 產品說明



## 操作步驟

1. 打開壓纖板及蓋板，將切割滑塊推至前端（如圖）



2. 將剝除好塗覆層的裸光纖放置於夾具內（ $250\mu\text{m}$  /  $900\mu\text{m}$ ），根據使用者需要確定好切割長度。按下合上壓纖板及蓋板固定光纖。



3. 關上蓋板後確保光纖處於水準線上。
4. 切割滑塊一次性向後推動，完成切割。



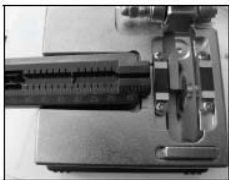
5. 打開蓋板及壓纖板，取出光纖；光纖取出後光纖端面請勿接觸任何物體，以免損壞光纖。

## 皮線光纖線的切割使用

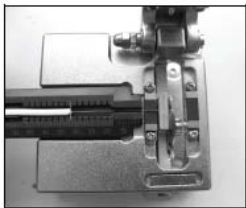
1. 移除圖示固定光纖夾具的螺絲。



2. 將適合皮線光纖使用的夾具(請依據需求自行購買)放置底座內。



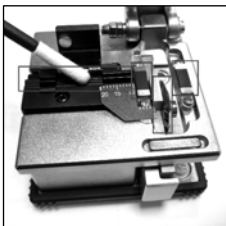
3. 將剝除外皮的光纖線放置在夾具內，設定好需要的長度，進行切割。



注：光纖細小但尖硬，請注意切割後剩餘光纖的收集處理，以免造成意外傷害。

## 清潔

1. 切割完成後，請清理切割後的斷纖，用棉花棒沾酒精清潔壓纖板上的污垢，切勿用丙酮或或有腐蝕性的溶劑清理壓纖板。切勿損壞刀片，以備日後使用。
2. 定期用棉花棒沾酒精清潔壓纖板上的污垢，切勿用丙酮或或有腐蝕性的溶劑清理壓纖板。
3. 載纖槽要時常清潔，確保槽內無灰塵及油垢，以免影響切割品質。

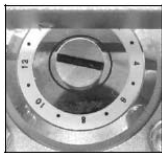


## 刀片的更換及調整

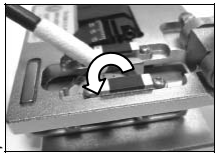
1. 刀片上註明 0-15 個切割點。
2. 當切割刀不能正常使用時，請即時清理刀片及光纖夾具（切勿使用酒精擦拭光纖壓墊）
3. 如果仍然不能正常切割，說明切割刀片切割點已經磨損不能繼續使用。
4. 調整刀片位置時請根據以下步驟使用。

### A. 調整刀片（按刀片上註明的 0-15 面依次轉動）

1. 自備“一”字型螺絲刀一把。
2. 首先用“一”字型螺絲刀將刀片上的螺絲轉鬆，如圖一
3. 使用棉花棒轉動刀片調整刀片位置，每次轉動一個面，轉動方式依箭頭指示，如圖二。
4. 完成後將刀片固定如仍然無法正常切割，需要按以下步驟調整刀片及切割滑塊的高度。



圖一

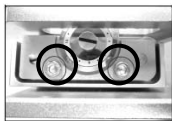


圖二

### B. 調整刀片高度

1. 採用內六角扳手，將刀片下方的兩顆內六角螺絲轉鬆，如圖三。
2. 微調右圖所示的螺絲。順時針方向調為升高刀片，反之為降低刀片高度，如圖四。

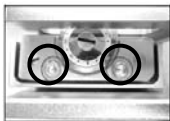
3. 採用內六角扳手，將刀片下方的兩顆內六角螺絲鎖緊，如圖五。
4. 打開壓纖板及蓋板，將剝除好塗覆層的裸光纖放置於夾具內（125mm/900mm），按下合上壓纖板，來回推動切割刀推塊，看切割刀刀片是否正好碰到光纖，如果未碰到，重複第2步，調高刀片，如果碰到太多，重複第2步，降低刀片。調整好最佳位置，用內六角擰緊第一步的鬆開的兩個內六角。



圖三



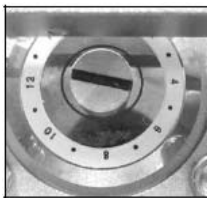
圖四



圖五

## C. 更換新刀片

1. 首先用“一”字型螺絲刀將刀片上的螺絲拆下如圖六，將舊刀片以鑷子夾起，並且裝上新刀片後將螺絲鎖上，如圖七。
2. 按調整刀片高度步驟進行調節刀片的高低。



圖六



圖七

注：請不要用不合適的一字及內六角螺絲刀進行調節切割刀。

## 簡易問題排除

如果切割刀發生問題，可能是以下的原因

問 題	排 除 方 法
光纖放置歪斜	確認光纖筆直放進切割刀槽座中
刀片位置過高	調整刀片高度
光纖壓墊髒污	清潔光纖壓墊
切割刀片髒污	清潔切割刀片
光纖壓墊髒污	將光纖取下並且重新剝皮及清潔光纖

# Pro'sKit®



PROKIT'S INDUSTRIES CO., LTD.

<http://www.prokits.com.tw>

E-mail: [pk@mail.prokits.com.tw](mailto:pk@mail.prokits.com.tw)

©2013 Copyright by Prokit's Industries Co., Ltd(C).