
IP Camera User Manual

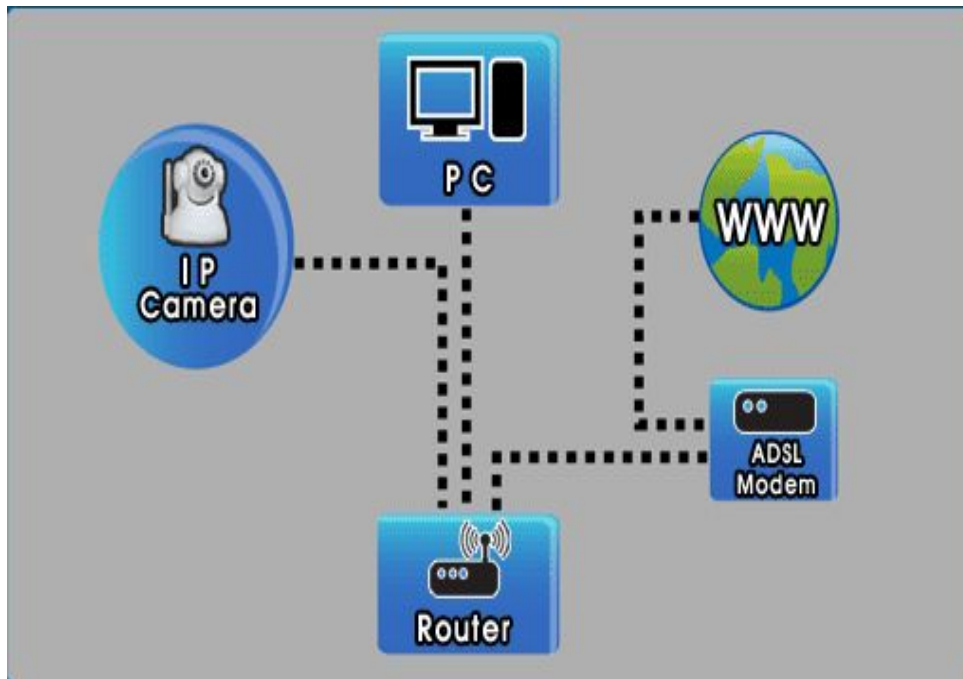
(For Windows OS)

A new generation of P2P IP camera adapts a groundbreaking P2P technology of new generation. The easy-setup, high quality camera delivers crystal clear surveillance video to your smartphone or PC. You can remotely control it from anywhere, anytime, and receive alerts to your smartphone or email address when motion is detected. You can also upload recorded video to your FTP server.

Note: The picture is for reference only.

1. Hardware Installation

Insert an end of cable into the camera, insert another end of cable to router. Of course, your router is connected with internet




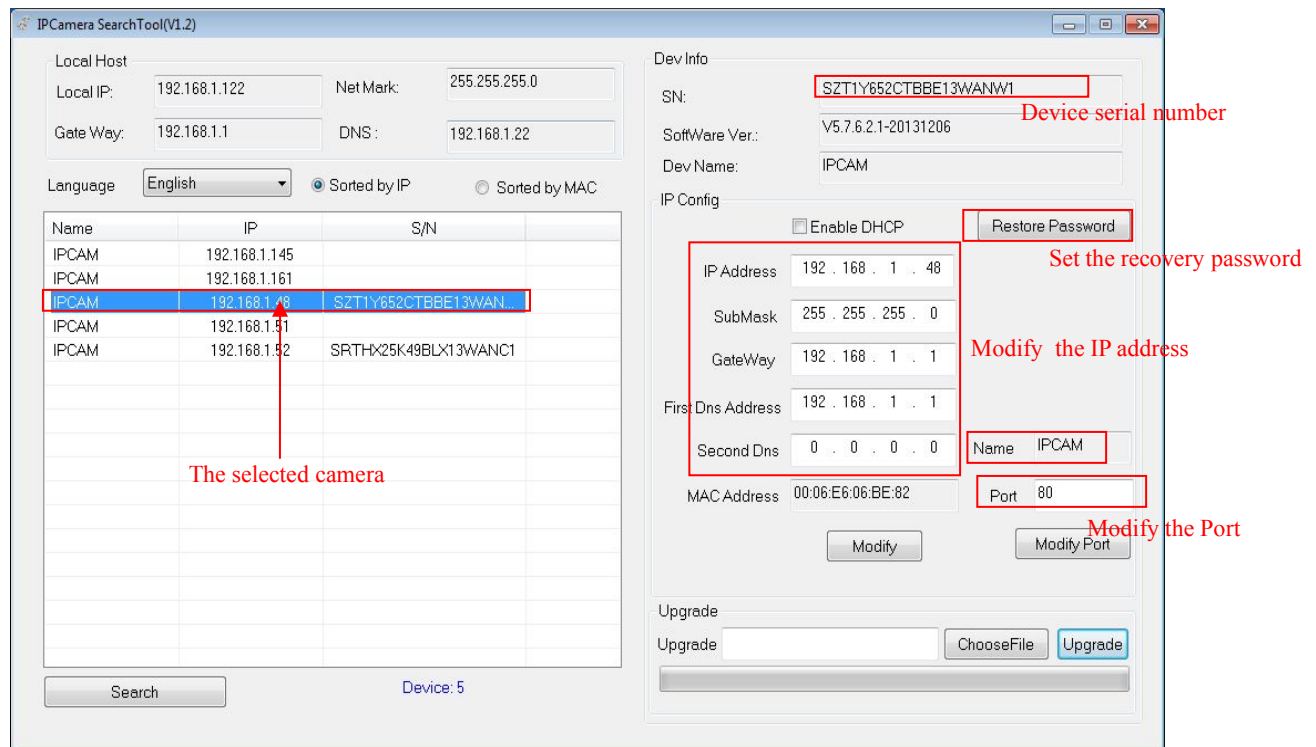
2. Software Installation

2.1 Insert the installation CD into the CD/DVD drive on your computer. The installation should start automatically.

Note: If the installation does not start automatically, choose Run from the Windows Start menu. Enter "d:autorun" (assuming installation CD is in D drive) in the run dialog box. You can also double-click on "Setup.exe" file on the installation CD to start the installation.



Run the Search Tool , The following screen will appear. Click [Next >] to continue



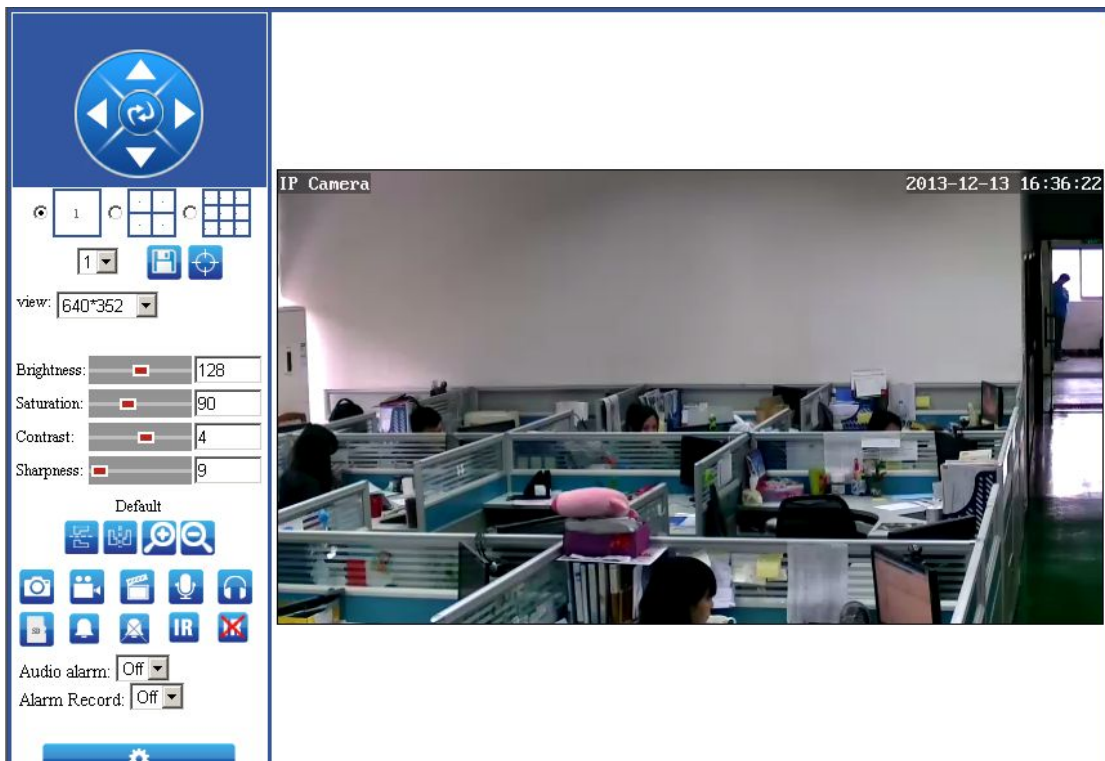
and enter the IP address directly open the login authentication page (for example, enter: http://192.168.1.48)to open the login screen as shown below shown,



- After entering the correct user name and password and click "OK" to open the monitor screen click on the appropriate browser model.



Choose the Language and stall Active at the first time,then Login in





Four camera in one screen



Nine camera in one screen

view: 1280*720

Resolution

Brightness: 141

Saturation: 90

Contrast: 4

Sharpness: 9

Flip Vertical

Playback

Alarm ON

Flip Horizontal

Mic

Alarm Off

Snapshot

Speaker

IR LED ON


Recording

SD Card

IR LED OFF

3.Camera setting:

3.1 Device Infomation

Click  to set the camera.User can see the Menu,Audio setting ,Network Setting,Alarm Setting,Advance Setting,system setting.

3.2 Audio setting.

Click audio setting to see the details.

Please note that the audio format is G726

4.Network setting:

User can set the a fixed IP ADDRESS or automatic get ip address for the camera,and set DNS by manual or from DHCP server.And user can set the port no(default port no is 80)

NOTE:User need to use wire first,after setted up wifi as shown above,then plug out the network cable and use wifi for the connection.

4.2 DDNS setting:

NOTE:User can get ddns user name and password after registered at the third-part DDNS supplier,such as www.dyndns.org or www.3322.com.

5. Alarm setting:

Monitor

- Media
 - Video
 - Audio
- Network
 - Network
 - Wireless
 - Ddns
 - P2P Settings
 - ONVIF
- Alarm
 - Alarm
 - Email
 - FTP
 - Alarm Linkage Settings
 - schedule
- Advanced
 - User
 - Timer record
 - Terminal
 - Multiple settings
- System
 - Time
 - Maintain
 - Device information
 - System Log

IP Camera 2013-12-13 17:54:27

Choose the style

External Alarm

External Alarm Mode Open

Audio alarm

Sound Alarm On

Audio alarm: On Off

Volume range: (1-

Choose a certain area to monitor

Window1 Sensitivity:

Window2 Sensitivity:

Window3 Sensitivity:

Window4 Sensitivity:

Apply

The choose Area Window will flicker after alarm triggered.

view:

Brightness:

Saturation:

Contrast:

Sharpness:

Default

Audio alarm:

Alarm Record:

IP Camera 2013-10-16 16:25:46

5.1 FTP Setting:

Monitor

- Media
 - Video
 - Audio
- Network
 - Network
 - Wireless
 - Ddns
 - P2P Settings
 - ONVIF
- Alarm
 - Alarm
 - Email
 - FTP
 - Alarm Linkage Settings
 - schedule
- Advanced
 - User
 - Timer record
 - Terminal
 - Multiple settings
- System
 - Time
 - Maintain
 - Device information
 - System Log

FTP

Server Address:

Server Port:

User name:

Password:

Passive mode: On Off

Path:

Test FTP settings: Please set first, and then test.

Apply Cancel

Test smtp - Microsoft Internet Explorer

Test.....Success.

After setted up,then test it.

Note: The default Port No is 21. And set the path for picture saving.

Choose to send pictures to user's email after alarm triggered ect.

5.3 Email Setting

Fill in the SMTP server

Default port is 25

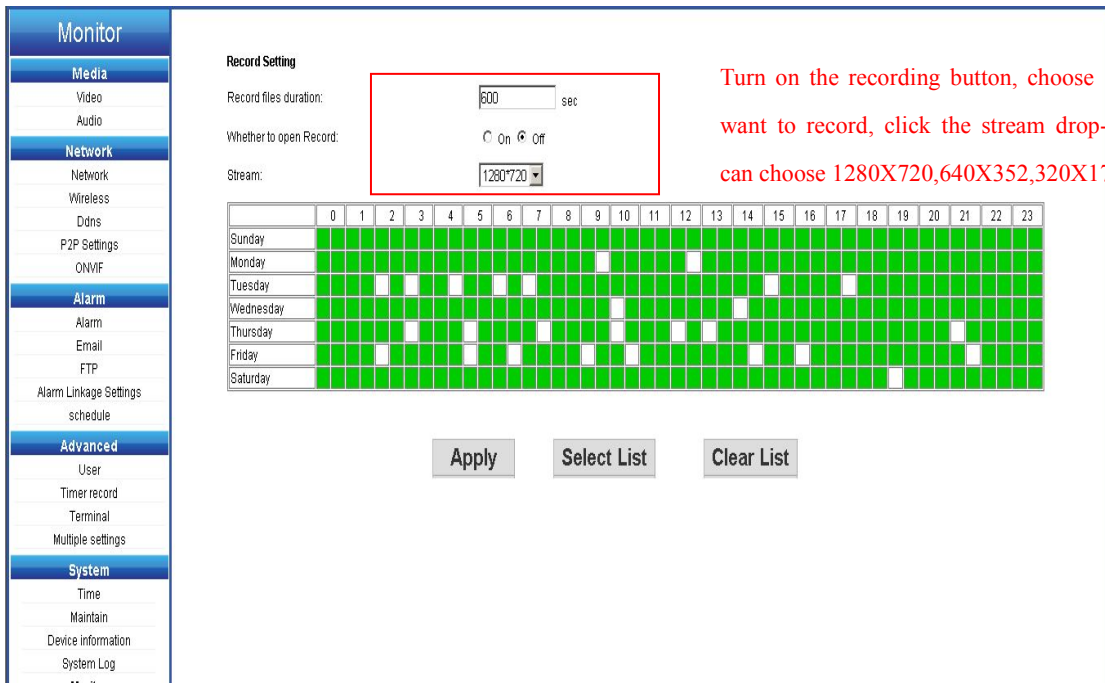
Finish the parameter settings, click save and then test

- Start the test, input User name and Password, the user name is the sending mail address and password is the email box's.
- After the setting is done, then click test button.
- SMTP server: different email provider has different server, if user use gmail email, then the SMTP server is smtp.gmail.com.

6. Advanced settings

6.1 Regularly recording


Open the regularly recording interface for recording settings.

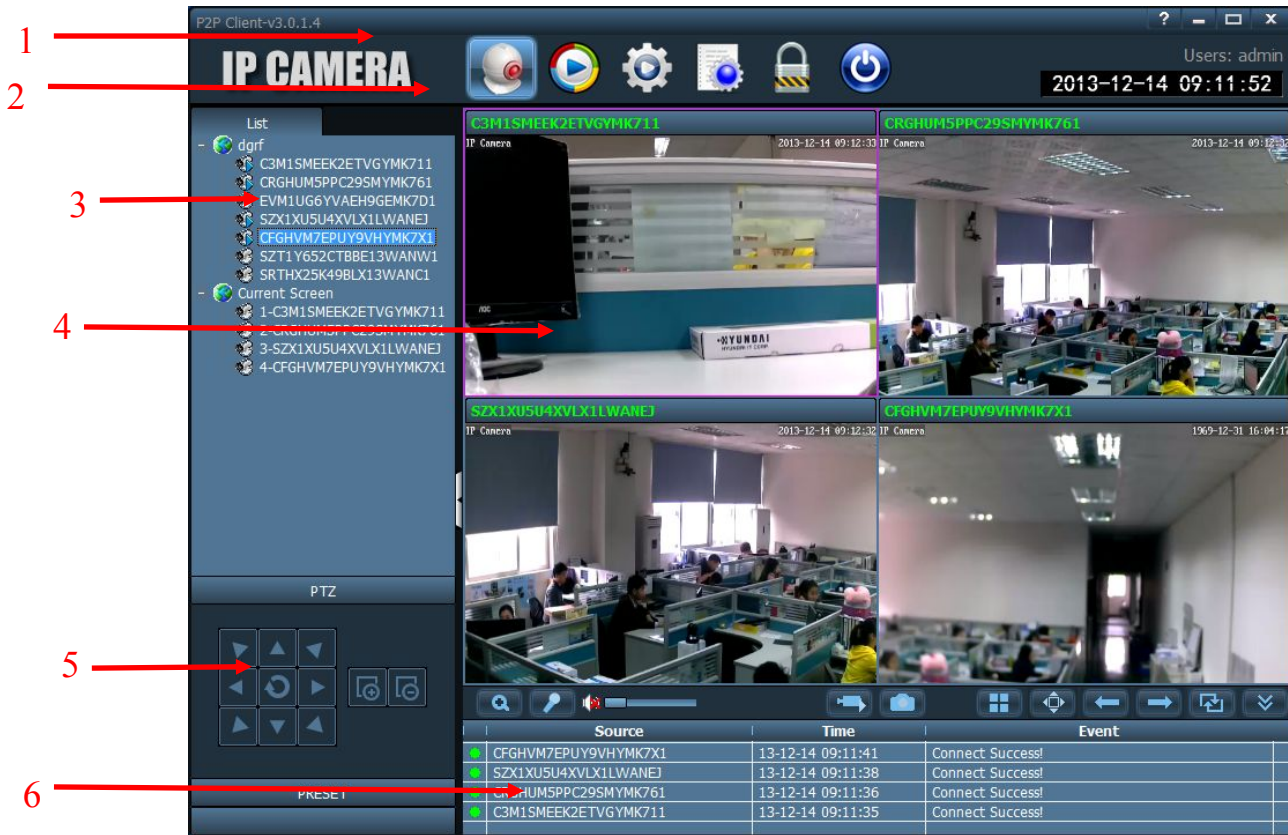


- User can choose when to record in the table and change how long to record. The stream also can be selected by the user themselves.

Super-Client Introduction

- Software Interface

Note:Run” P2PClient”  Setup.exe Macrovision Corp... n the CD.After installed,it will show the



The interface shown as above have six parts.

1.System Setting

2. Menu

3.Camera List

4. 4.Live View

5. PTZ control

6. Alarm List

● **Add Device**

1.Add a device in LAN:



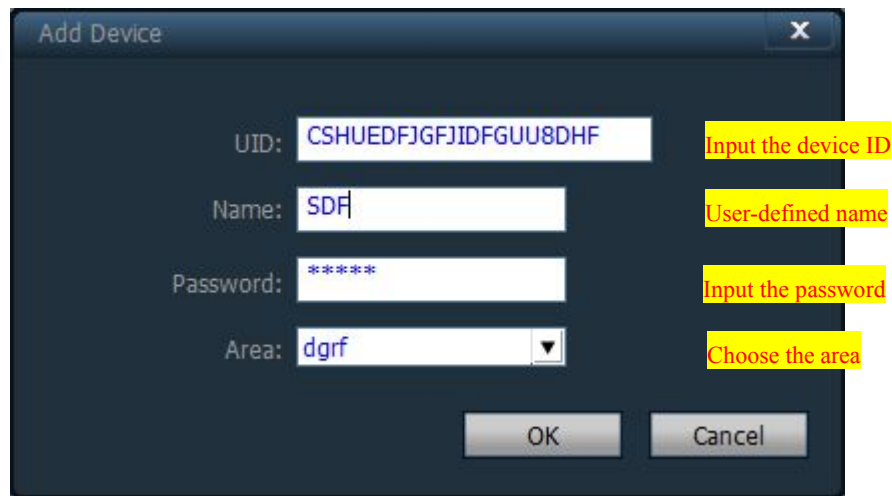
Click “System Setting” button and user need to finish some steps to add cameras in LAN. Please check the steps as shown below.



Add Area	Name the monitoring Area
Modify Area	Revise the area name
Delete Area	Delete the area
Add Device	Add Device
Modify Device	Revise Device
Delete Device	Delete Device
>>	Add the device into the selected area
Search	Search Device in LAN
Select All	Choose All

2.>Add Device

Click the button  ,then it shown as below:



UID: CSHUEDFJGFJIDFGUU8DHF Input the device ID

Name: SDF User-defined name

Password: ***** Input the password

Area: dgrf Choose the area

OK Cancel


UID: Use can find the ID on the sticker of the camera.

Name: Name it at random, no more than 15 letters.


● Image Preview





Source	Time	Event
CFGHVM7EPUY9VHYMK7X1	13-12-14 09:11:41	Connect Success!
SZX1XU5U4XVLX1LWANEJ	13-12-14 09:11:38	Connect Success!
CRGHUM5PPC29SMYMK761	13-12-14 09:11:36	Connect Success!
C3M1SMEEK2ETVGYMK711	13-12-14 09:11:35	Connect Success!

 Talkback function, When using this function, It will show a letter "T" behind

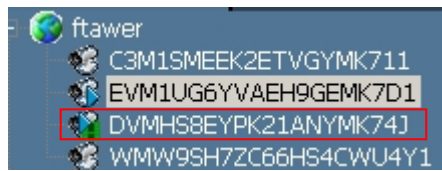
of the camera name 


 Electronic Enlarge Function. User can enlarge the chosen area after click the button to see more details of the chosen area.

 Audio. It will show  when the audio on. User can monitor multi-camera at the same time.

 Recording, when click on the video recording, In the camera list with

corresponding UID , click again to close recording.




 Snapshot

 Full Screen

 Front Page




 Next Page

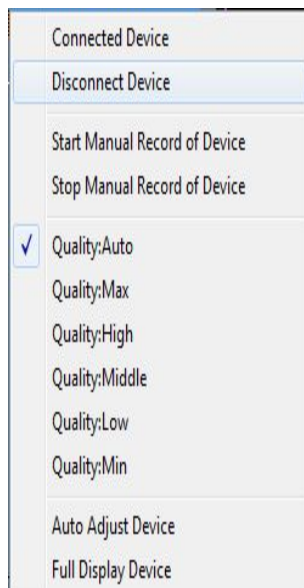
 Robin cut button, click the open group follow cut, cut click suspend groups follow again

 Alarm List show or close

Acyclic preview



Double the name of camera, then it will show video on the right hand. If show , it means connected. If shown , it means disconnected. If show , it means that there is a alarm for the



Connected Device: Connect

Disconnect Device: Disconnect

Start Manual recording of device: Start Video Recording

Stop Manual Recording of device: Stop Video Recording

Quality: Automatic Adjust

Highest Quality: Resolution 1280*720 Bit rate: 512kbps Frame Rate: 5fps

High Quality: Resolution: 640*480 Bit rate: 384kbps Frame Rate: 10fps

Middle Quality: Resolution 320*240 Bit rate: 256kbps Frame Rate: 10fps

Low quality: Resolution 320*240 Bit rate: 128kbps Frame Rate: 10fps

Lowest quality: Resolution 320*240 Bit rate: 128kbps Frame Rate: 5fps

Automatic adjust pictures: Choose the chosen device, automatic adjust the

● Preview

When switching to the group list, only use circulation mode display images, must first while trying to open follow cut set grouping, specific Settings view

"equipment group. click  button to open circulation

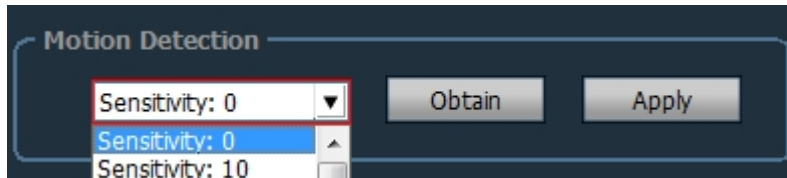
, click again  to stop circulation.

1) motion detection

Set the motion detecting sensitivity

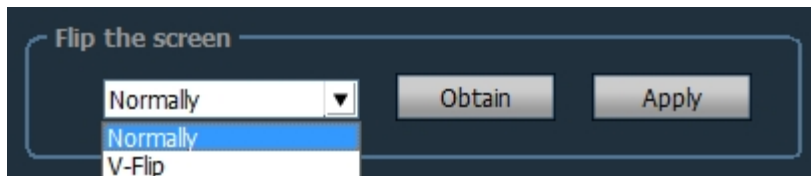
First step: Choose the need to modify the equipment in the tree list

Second step : Select the sensitivity of the equipment from (0-100), click Settings

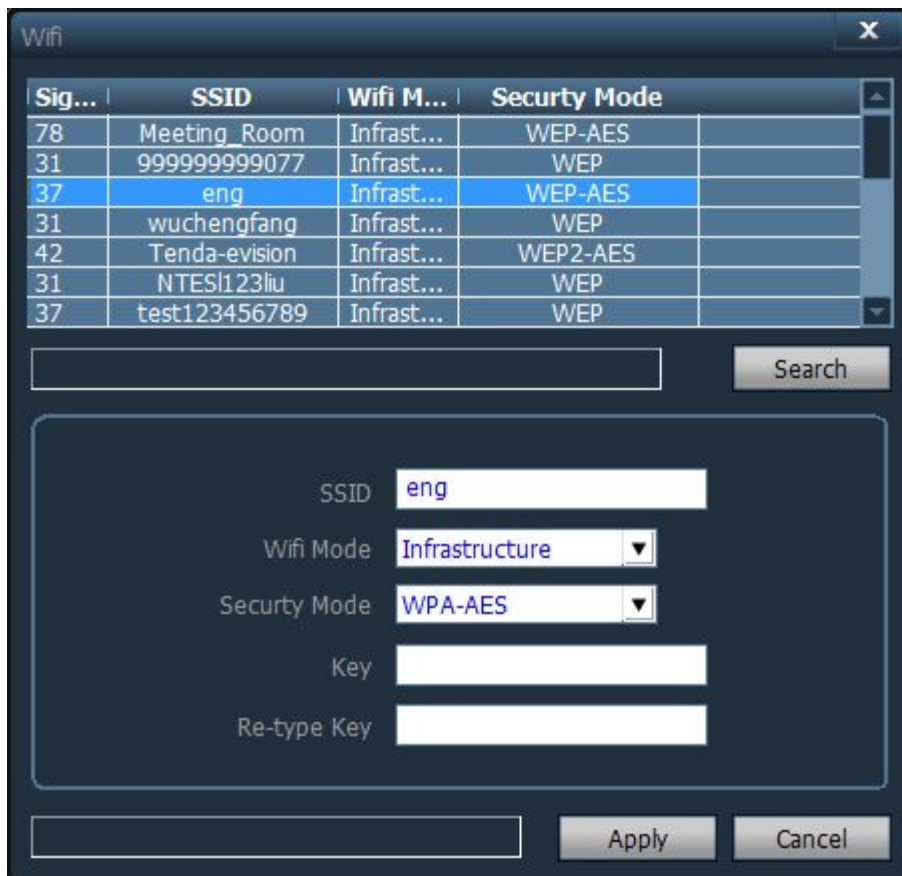


1) Picture flip

Can be set up, the vertical flip, flip horizontal, vertical flip horizontal four kinds.



2) WIFI setting



Setting step:

First step: Select enable WIFI, click search the WIFI signal

Second step: The double-click the SSID signal of WIFI

Third step: Enter The WIFI password key

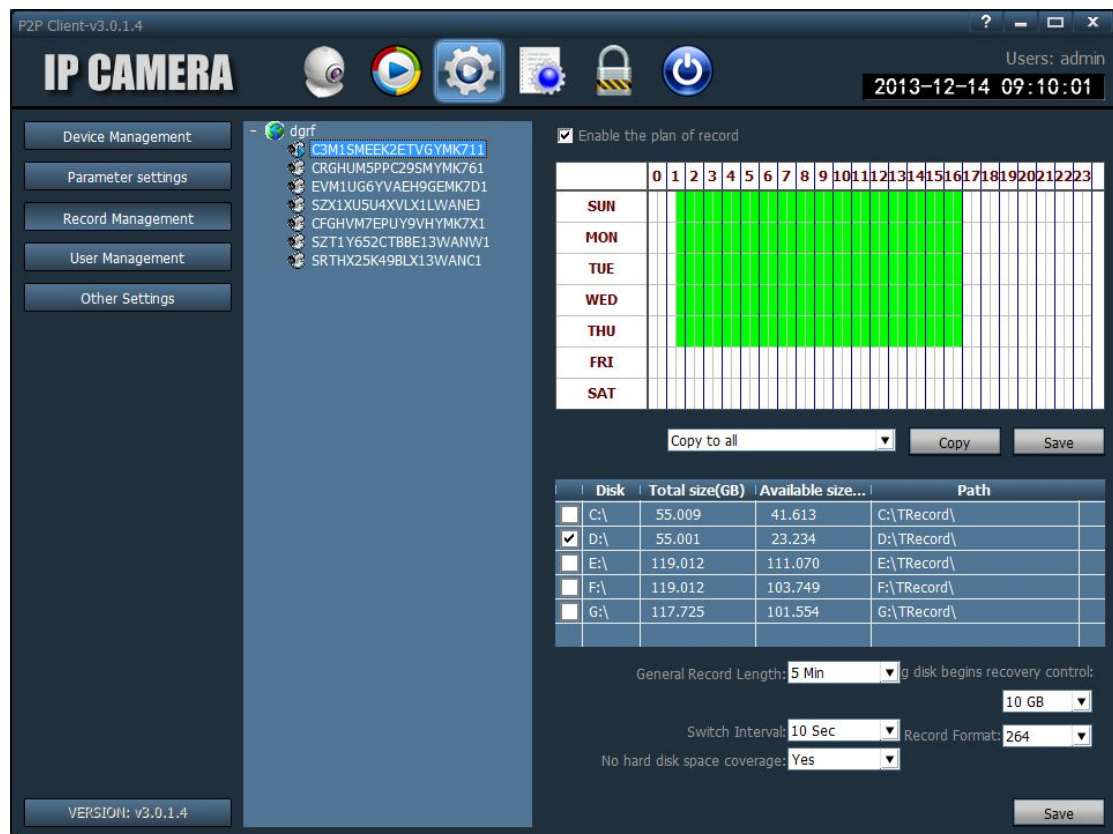
Fourth step: Click the Settings button, and then click the check WIFI, restart the equipment

Fifth step: For equipment to restart disconnecting, let its use wireless automatic connection

- video management

Open plan video: Choose channel and then in the planner, Click the left mouse button drag a green block as shown. Green is the range of video time, after

period of time have been set, click save.

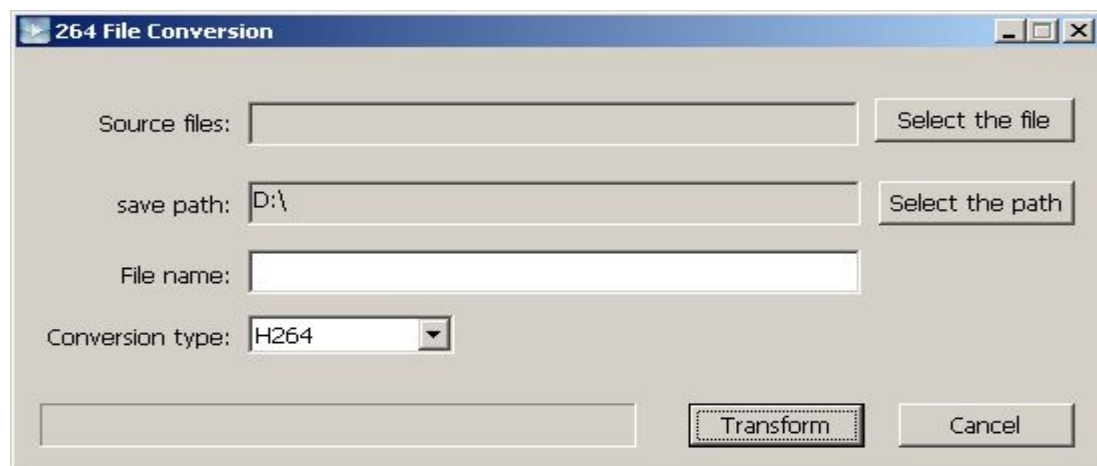


Close the video: cancel before box, click save, or cancel the green blocks in the schedule and click save. Cancel the green block method: just click the left mouse button in the green block drag mouse can cancel the green blocks.

Attention: If all the equipment of video plan at the same time, need to set up a device, click copy and save after all equipment opens the video program。

- video format conversion

Into the application bar, open the "h. 264 format conversion appeared the interface for the following:



Steps are as follows:

- ① Select the file: Choose the need to convert video files
- ② Select the path: Set the converted save the path
- ③ File name: The converted file name
- ④ Conversion type: Convert the file type (h. 264 AVI and ASF);

After the above Settings, click on the "Transform" conversion can be achieved;



Connection timeout: connection timeout 5 set to 60 seconds

Log to save time: one month, two months, three months, six months four options, the client logs in the set period of time not to delete

Capture format: refers to the client captured image format, capture format: JPG, BMP two kinds

Image capture path: refers to the client captured images saved path
 Single picture number: can set the maximum number of single: 16, 25, 36, (need to restart the software to work)

Display mode: Direct said the Draw 3 d graphic rendering Direct 3 d rendering
 Save: modify the parameters need to click "save" button to set to take effect
 Export parameters: pour out the client all set parameters (backup all configuration parameters)

Import parameters: set the parameters of the export and import to another client, restore all configuration parameters (two client version is consistent, inconsistent if possible exception.)

Reconstruction of video index: delete the video database index file, re-established video database index file.

- Pan-tilt control

By the direction key can control yuntai eight directions, by dragging the scroll bar can choose the speed of yuntai, "-" said mixing machine speed slow, "+" said yuntai acceleration



Focal length larger buttons,
need a camera support



Focal length smaller button,
need a camera support