

STEP 4 LOGIN AND OPERATION

▶1. User Login.

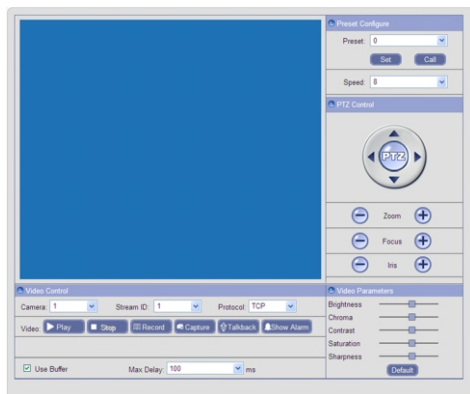
Select the system language, input user name, password and port number, then click "Login" button to enter into the main interface.



Note: By default, IP address is 192.168.1.10, port is 5000, ID is admin, and password is blank. With password enabled, you need to enter you ID and password to access the system.

▶2.Operation.

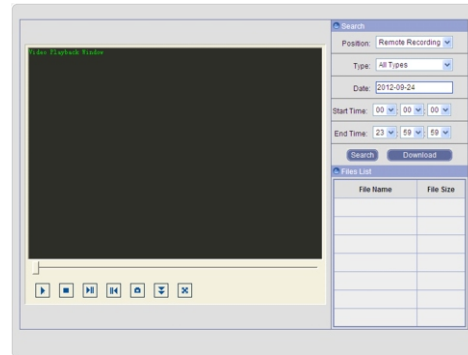
2a. Live Video:



User can do operations like Play, Stop, Record, Capture, Talkback, Show Alarm, Preset and Video Parameters Configure, Full-screen Viewing and PTZ Control, etc.

2b.Playback:

Click "Playback" button in menu bar to enter the video playback page.



User can search for recorded video files or snapped pictures in local PC or storage device according to settings: select the file position, type, a certain date and time, then click "Search" button, the searched files information will be displayed in the Files List, and then you can do relevant operation, such as playback, download, etc.

2c.Configure:

User can setup the system parameters in this mode. Here are several important settings.

①. Network Configure

Go to Configure -> Network Configure to get and modify the IP address, device port and other parameters, enable DHCP function to obtain IP address from the router automatically.

②. Record Configure

Go to Configure -> Record Configure to set storage rule and the period of scheduled recording.

③. Alarm Configure

User can enable alarm schedule, set the period of motion detection and I/O alarm detection, set motion area and linkage mode like linkage alarm output, linkage output duration, linkage recording / capture, sending E-mail, FTP uploading, etc.

④. Setting the basic parameters.

Go to Configure -> Stream Configure to set stream type, frame rate, resolution, etc.

Go to Configure -> Time parameters to set date, time, time zone, and synchronize time with PC.

Go to Configure -> OSD to set the display system time and channel name, adjust the display position and color.

Click "Set" button to save the setting; when the setting is not saved, click "Query" button to return to the previously saved parameters; when the setting has been saved, click "Query" button to query whether the setting is successful.

2d.Log:

Click "Log" button to enter the log search page, select the type of log, start date and end date, click "Query" button to start search log, the searched log information will be displayed in the log information list.

For the detailed operation like mobile phone remote view, please refer to the user manual.

Quick Guide Manual of IP Camera



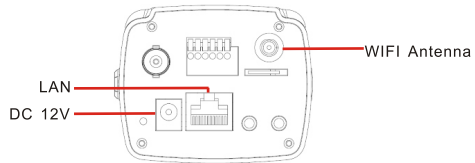
USER MANUAL
Security Camera



STEP1

Getting Started

STEP 1 Getting Started



Note: The picture is for references only, please take the actual product as the truth.

▶ **1. Connecting the power cable to the DC 12V port on the camera, and the power cord into an electrical outlet, and then turn on the switch.**


▶ **2. Connecting to your router.**
Connect an Ethernet cable (not included) to the NET port on the camera and connect the other end to your router (not included).


Connecting to your Camera
Once your camera is connected to your network, you can connect to it using your PC, iPhone, iPad or Android phone or tablet.

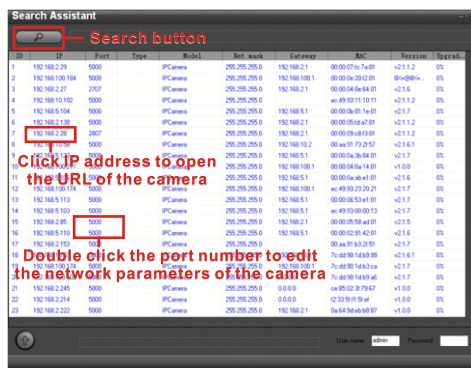
STEP2 Accessing your camera locally with browser

▶ **1. Using the SearchTool.**

1a. Install the SearchTool  on the CD that comes with the camera.

1b. Run the SearchTool. 

1c. Click search  button to search for the camera on the intranet automatically.



STEP2

Accessing your camera locally with browser

1d. Click the IP address to open the URL of the camera, or you can directly open Internet Explorer browser and enter the IP address of camera in address bar to access it.

Note: The IP address of the camera should be in the same field as your computer. You can change it by double clicking the port number.

▶ **2. Download and Install ActiveX.**
You need to install ActiveX Control when you access the camera for the first time through IE browser.

2a. Click "Download ActiveX" to download the ActiveX.

2b. Install the downloaded file "WebClient".

2c. Reopen Internet Explorer after ActiveX installation completes, enter IP address of the camera to turn to login interface.

STEP 3 Accessing the camera on the Internet with browser.

▶ **1. Port forward.**

1a. Accessing your router by entering the gateway address, e.g. [Http://192.168.1.1](http://192.168.1.1)

1b. Find the option called port mapping or port forwarding.

1c. Specify the HTTP port (default is 80) and device port (default is 5000) to be forwarded from the internal/local IP address of your camera (e.g. 192.168.1.10) to the Internet.

EXAMPLE Port Range

Application	Start	End	Protocol	IP Address	Enable
HTTP	80	to 80	Both	192.168.1.10	<input checked="" type="checkbox"/>

Note: Port forwarding guides for various routers on www.portforward.com

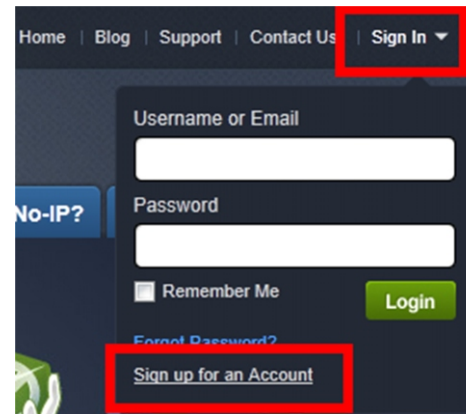
▶ **2. DDNS (Dynamic Domain Name System) register on the third party website. (no-ip for example).**

Open the web browser (Internet Explorer by default) and enter <http://www.no-ip.com> in the address bar.

STEP3

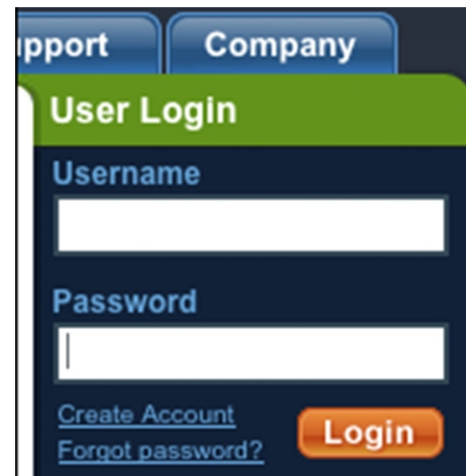
Accessing the camera on the Internet with browser.

2a. Create an account.
Fill in the required fields on the new account form. Once you've filled in the required information and agreed to our Terms of Service, click the "Sign Up Now!" button at the bottom of the page.



2b. Confirm your account
Once you have submitted your account information into the new user form, it will send a confirmation email to the address you provided. You will need to check that account and look for the email from No-IP.com. The email contains a link you must click in order to confirm your account.

2c. Login to your account



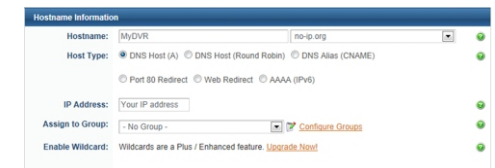
STEP3

Accessing the camera on the Internet with browser.

2d. Add a host or domain to your account



In order to add a host to your account, select the "Add" link from the "Hosts/Redirects" menu. This will bring up the Add a Host page. And now you're ready to fill in the details of your new hostname.



Note: For more detailed guide of No-ip service, please visit <http://support.no-ip.com/>.

▶ **3. Enable DDNS on the IP Camera.**
Go to Configure -> Advanced Configure -> DDNS Configure to enable DDNS function, input host domain, user name and password of your account at no-ip.com, choose www.no-ip.com as domain server.

Note: Please allow a little time for the DDNS service to update with your new DDNS address. This is normal for the DDNS system.

▶ **4. Accessing your IP Camera remotely.**
Open Internet Explorer and enter the host name (e.g. <http://MyIPC.no-ip.org>) in the address bar to access it.

Note: Please refer to the user manual for other detailed operation.