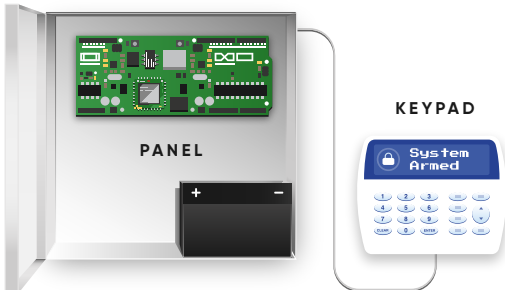


## STEP 1 Locate your alarm panel

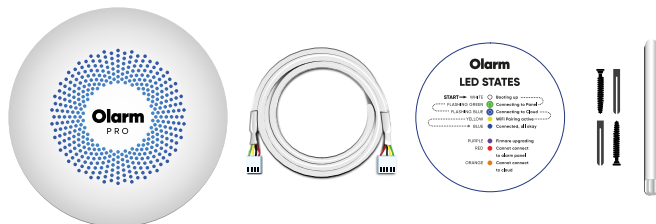
Note that the alarm panel is not the keypad. Alarm panels are typically installed in a hidden location in the home such as a cupboard or basement.



## STEP 2 Unbox your Oalarm PRO

The Oalarm PRO box includes the following:

- 1x Oalarm PRO device
- 1x Connector cable
- 1x Drill hole template and LED colour legend
- 2x Screws and wall plugs
- 1x External antenna (selected Oalarm PRO models only)



## STEP 3 Download the Oalarm mobile app and register your device

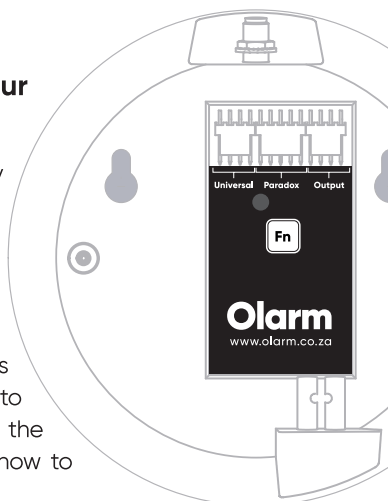


Scan QR code, or navigate to your App Store on your device and search for "Oalarm".

## STEP 4 Connect your Oalarm PRO device to your alarm panel

The Oalarm PRO device currently supports a wide range of alarm panels including models from Paradox, Texecom, IDS & DSC.

Different alarm system brands & models require varying ways that the Oalarm PRO needs to be connected to them. See the reverse side of this page for how to connect each alarm brand.



## STEP 5 Check your Oalarm PRO's status

Colour	Status
○ White	▶ Booting Up
● Flashing Green	▶ Connecting to alarm panel
● Flashing Blue	▶ Connecting to cloud
● Blue	▶ Connected, all okay
● Red	▶ Cannot connect to alarm panel
● Orange	▶ Cannot connect to cloud
● Yellow	▶ WiFi Pairing active
● Purple	▶ Firmware upgrading - do not power the device off

## STEP 6 Mount your device

Mount your device using the screws and drill template provided.

We suggest mounting the Oalarm PRO device on a wall or on the outside of the alarm panel. Please do NOT mount the Oalarm PRO inside the alarm box or near any other radio equipment as it will reduce the signal strength and result in your device not functioning correctly.

## Troubleshooting

● **If your device LED remains flashing Green for more than 3 minutes** - Please check the connection between the Oalarm PRO and the alarm panel.

● **If your device LED is Red** - Please check the connection between the Oalarm PRO and the alarm panel

● **If your device LED is Orange** - Please ensure that the Oalarm PRO is located in an area with good Vodacom and/or MTN signal strength. If it is not, please ensure that your device is connected to Wifi using the wizard inside the Oalarm app.

⊘ **If your device LED is not coming on** - Please check the connection between the Oalarm PRO and the alarm panel and that the alarm panel is connected to power.

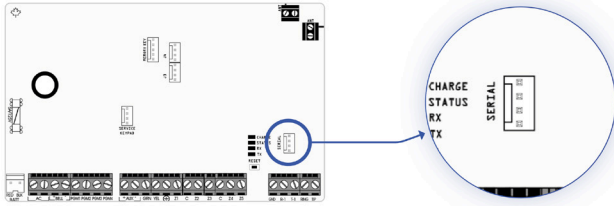
● **If your device LED remains purple for more than 15 minutes** - Please contact Oalarm Support

**! Please note:** Keypad to Panel wiring sequence may differ from Diagram. Do not change the sequence. Follow the instructions when connecting your Olarm PRO to the alarm panel.

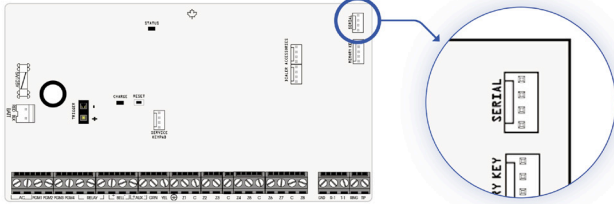
### PARADOX Attach serial plug

Plug the 4-pin plug on the supplied cable into the port marked "SERIAL" on the alarm panel and connect the 5-pin plug to the port marked "Paradox" on the Olarm PRO.

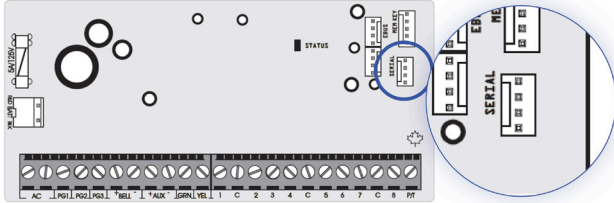
MG 5050



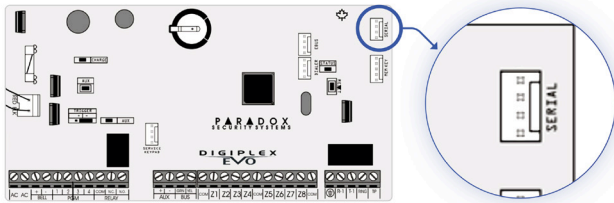
SP 6000



SP 65



EVO 192



### TEXECOM 1. Configure the alarm system

On the Texecom keypad, enter the commands below to link the alarm panel with the Olarm PRO device:

- Enter Engineering code
- Press **☰**
- Press **9** (**Programming Menu**)
- Enter **7 6** (**Download Menu**)
- Press **2** (**UDL Passcode**)
- Enter **1 2 3 4**
- Press **✓** or **Yes** (depending on keypad)
- Press **8** (**ComIP-3 Subnet Mask**)
- Enter **0 0 8**  
(008 = 255.255.255.0 a full list of available values can be found in INS159-11 or later)
- Press **7** (**ComIP-2 Gateway IP Address**)
- Enter Gateway Address: **192168000001**
- Press **6** (**ComIP-1 IP Address & Port**)
- Enter IP address and port number: **19216800000110001**
- Press **5** (**Com1 Device type**)
- Enter **3** (**device type for ComIP**)
- Press **☰** (**Programming Menu**)
- Enter **9 9** to exit

### 2. Connect the serial plug

Plug the 5-pin white plug on the Olarm PRO hookup cable into the port marked "COM 1" on the alarm panel and the 4-pin side of the cable to the port marked "Universal / Texecom" on the Olarm PRO.

### DSC (Power series only) 1. Power down the alarm panel

Disconnect both the Mains and Battery power from the alarm panel before continuing.

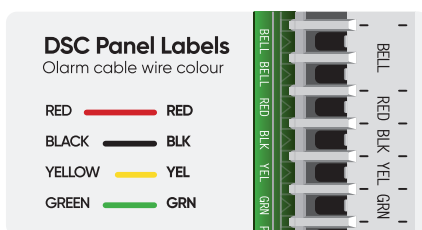
### 2. Cut the connector cable

Connect the 4-pin connector to the **Universal** port on the Olarm PRO.

Cut the 5-pin plug off the cable and strip the wires so you can insert them into the alarm panel terminals.

### 3. Connect to the alarm panel

Wire the stripped end of the cable into the alarm panel, as shown here, and connect the 4-pin plug to the Olarm PRO port marked "Universal / DSC".



### 4. Turn the alarm panel back on

### IDS (805 only) 1. Power down the alarm panel

Disconnect both the Mains and Battery power from the alarm panel before continuing.

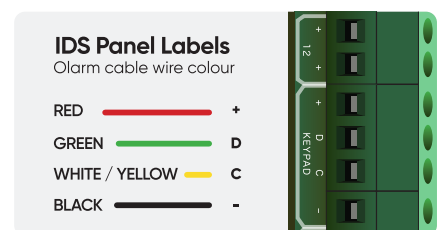
### 2. Cut the connector cable

Connect the 4-pin connector to the **Universal** port on the Olarm PRO.

Cut the 5-pin plug off the cable provided and strip the wires so you can insert them into the alarm panel terminals.

### 3. Connect to the alarm panel

Wire the stripped end of the cable into the alarm panel, as shown here, and connect the 4-pin plug to the Olarm PRO port marked "Universal / IDS".



### 4. Turn the alarm panel back on