



promate.net Lifestyle Technology

**PX16**

Bluetooth™ Ultra-Mini Headset



User Guide

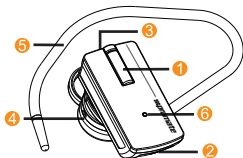
## Introduction

The Promate PX16 is an ultra-small, lightweight headset ideal for people on the go. Performance is insured with excellent sound quality and a single multi- function button, while mobility is enhanced with a comfortable design weighing only 4 grams! Bluetooth™ 3.0 with EDR allows fast pairing, strong connections and compatibility with most Bluetooth™ mobile phones. A unique headset for easy, friendly everyday use.

## Getting started

The headset contains the following parts:

- (1) Multifunction button
- (2) Microphone
- (3) Charger connector
- (4) Earphone
- (5) Ear hook
- (6) Indicator light



Before using headset you must charge the battery and pair the headset with a compatible phone.

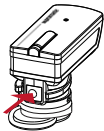
## Charging the battery

Fully charge the battery for at least 3 hours before the first use. Use only the supplied AC charger.

This device has an internal non-removable rechargeable battery. Do not attempt to remove the battery from the device as you may damage the device

1. Connect the charger cable to the headset.
2. Connect the charger to an electrical outlet. The red indicator light will turn on during charging. If charging does not start, disconnect the charger and plug it in again. Charging the battery fully may take up to 2 hours in normal use.

3. When the battery is fully charged, the red indicator light will turn off and the blue indicator light will turn on. Disconnect the charger from the electrical outlet and the headset. The fully charged battery has power for up to 7-8 of talk-time and up to 100-180 hours of stand-by time. The talk and standby times will vary with different mobile phones.



## Switching the headset On/Off

To switch on, press and hold the power key. There will be a beep tone, and the blue LED will be illuminated. When the headset is connected to a paired phone and is ready for use, the blue indicator light will flash slowly. To switch off, press and hold the power key. There will be a tone and the blue indicator light will flash twice before turning off.

## Pairing the headset with a compatible phone

1. With the headphone off, press and hold the multifunction button for about 5 seconds, until the blue LED flashes quickly.
2. Activate the Bluetooth™ feature on the phone and set the phone to search for Bluetooth™ devices.
3. Select the headset from the list of found devices (PX16).
4. Enter the pass code "1234" to pair and connect the headset to your phone. If the pairing is successful, the blue LED will flash twice. For some phones you may need to make the connection separately after pairing. See the user guide of your phone for details. You only need to pair the headset with your phone once.
5. If pairing is successful, the headset will beep, and will appear in the phone menu where you can view the currently paired Bluetooth™ devices.

## Disconnecting the headset from the phone

To disconnect the headset from your phone (for example, to connect the phone to another Bluetooth™ device) see the following:

- Switch off the headset.
- Remove the headset from the list of paired devices in your mobile phone
- Move the headset more than 10 meters (30 feet) away from the phone to "break" the Bluetooth™ connection. You do not need to delete the Bluetooth™ headset from your phone's Bluetooth™ device list if you only want to temporarily disable the connection.

## Reconnecting the paired headset with your phone

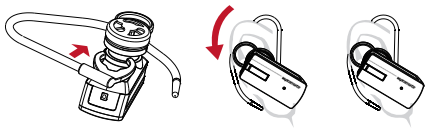
To reconnect the headset with your phone just switch on the headset and it will automatically reconnect with your phone (depending on the phone model).

## Making / Receiving Calls

Place the headset over your ear. The headset is provided with an ear loop that you can use for a better fit on your ear. To use the headset without the ear loop, plug the headset into your ear and point the microphone toward your mouth. To use the headset with the ear loop, clip the ear loop to the earpiece. It can be rotated to fit either the left or right side.

### Call administration

To make a call, use your phone in the normal way when the headset is connected with your phone. Once the call is connected, simply press the multifunction button once to transfer the active call to the headset. If your phone supports redial, press and hold the multifunction key for 5 seconds when no call is in progress.



If your phone supports voice dialing, press and hold the multifunction key when no call is in progress and proceed as described in the user guide of your phone. When no call is in progress and proceed as described in the user guide of your phone.

When you receive a call, the blue indicator light will flash quickly and you will hear a ringing tone through the headset.

To answer the call, press the multifunction key briefly, or use the phone keys. If the automatic answer function is on, the phone will automatically answer the incoming call after one ring. To reject an incoming call, briefly press the multifunction key twice, or use the phone keys.

To end a call, press the multifunction key once or use the phone keys.

### Switching the call between phone and headset

To switch the call between the headset and a compatible phone, press and hold the multifunction key, or use the respective function in your phone.

### Using the headset with several phones

You can pair the headset with up to eight phones but connect it with only one phone at a time.

The phone that was first paired with the headset is the default phone. If the headset is switched on within 10 meters (30 feet) of several paired phones, the headset tries to connect with the default phone.

If the headset cannot connect with the default phone. The headset tries to connect with the last used phone. If the headset cannot connect with this phone either, one of the other six paired phones can be connected with the headset. To make the connection, see the user guide of your phone.

## Battery Information

Your device is powered by a rechargeable battery. The full performance of a new battery is achieved only after two or three complete charge and discharge cycles. The battery can be charged and discharged hundreds of times, but it will eventually wear out. Recharge your battery only with approved chargers designated for this device. Unplug the charger from the electrical plug and the device when not in use. Do not leave a fully charged battery connected to a charger, since overcharging may shorten its lifetime. If left unused, a fully

charged battery will lose its charge over time. Never use any charger that is damaged. Leaving the device in hot or cold places such as a closed car in summer or winter conditions will reduce the capacity and lifetime of the battery. Always try to keep the battery between 15°C and 25°C (59° F and 77° F). A device with a hot or cold battery may not work temporarily, even when the battery is fully charged. Battery performance is particularly limited in temperatures below freezing.

Do not dispose of batteries in a fire as they may explode. Batteries may also explode if damaged.

Dispose of batteries according to local regulations.

Please recycle when possible.

Do not dispose as household waste.

## Troubleshooting

If you cannot connect the headset with your phone:

- Ensure that the headset is charged, switched on, and paired with a Bluetooth™ mobile phone.
- Ensure that the Bluetooth™ function is activated on your phone.
- Check that the headset is within 10 meters (30 feet) from your phone and that there are no obstacles between the headset and the phone such as walls or other electronic devices.

## Care & Maintenance

Your device is a product of superior design and craftsmanship and should be treated with care.

The suggestions below will help you protect your warranty coverage.

- Keep all accessories and enhancements out of reach of small children.
- Keep the device dry. Precipitation, humidity, and all types of liquids or moisture can contain minerals that will corrode electronic circuits. If your device does get wet, allow it to dry completely.
- Do not use or store the device in dusty and dirty areas. Its moving parts and electronic components can be damaged.

- Do not store the device in hot areas. High temperatures can shorten the life time of electronic devices, damage batteries, and warp or melt certain plastics.
- Do not store the device in cold areas. When the device returns to its normal temperature, moisture can form inside the device and damage electronic circuit boards.
- Do not attempt to open the device.
- Do not drop, knock, or shake the device. Rough handling can break internal circuit boards and fine mechanics.
- Do not use harsh chemicals, cleaning solvents, or strong detergents to clean the device.
- Do not paint the device. Paint can clog the moving parts and prevent proper operation.

All of the above suggestions apply equally to your device, battery, charger, or any enhancement. If any device is not working properly, take it to the nearest authorized service facility for maintenance.



[www.promate.net](http://www.promate.net)