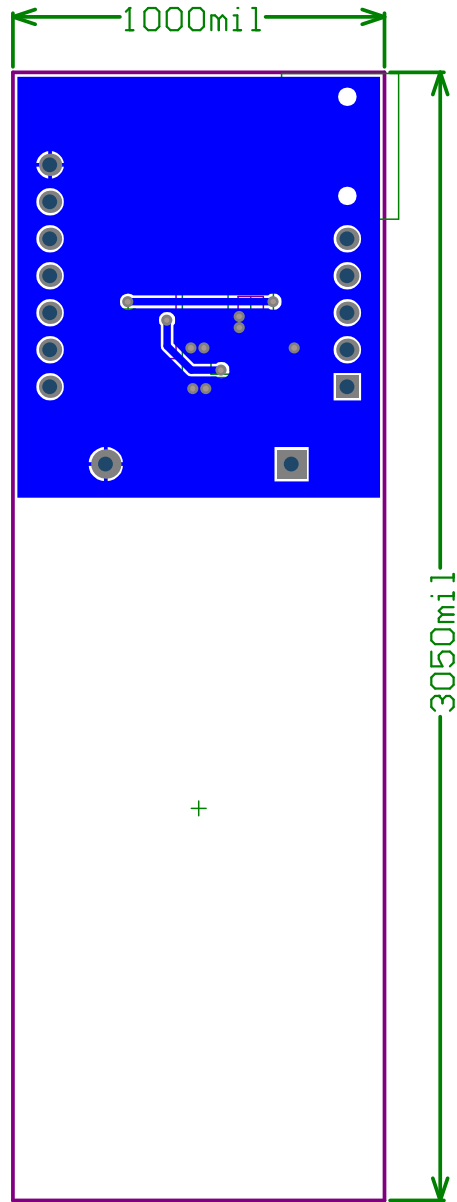


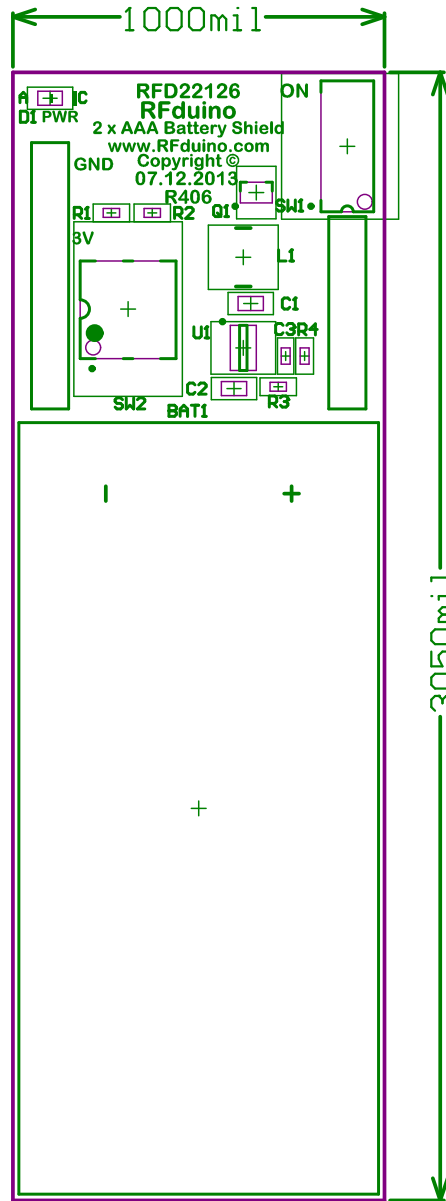
LAYERS

- TOP COPPER
- DIMENSIONS
- ROUTING KEEPOUT LAYER



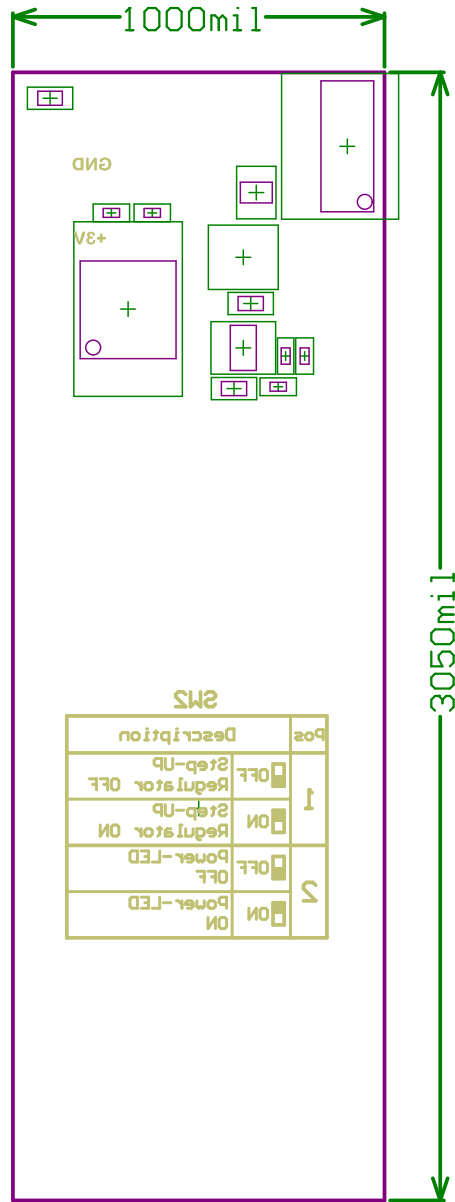
LAYERS

- BOTTOM COPPER
- DIMENSIONS
- ROUTING KEEPOUT LAYER



LAYERS

- TOP OVERLAY
- DIMENSIONS
- ROUTING KEEPOUT LAYER



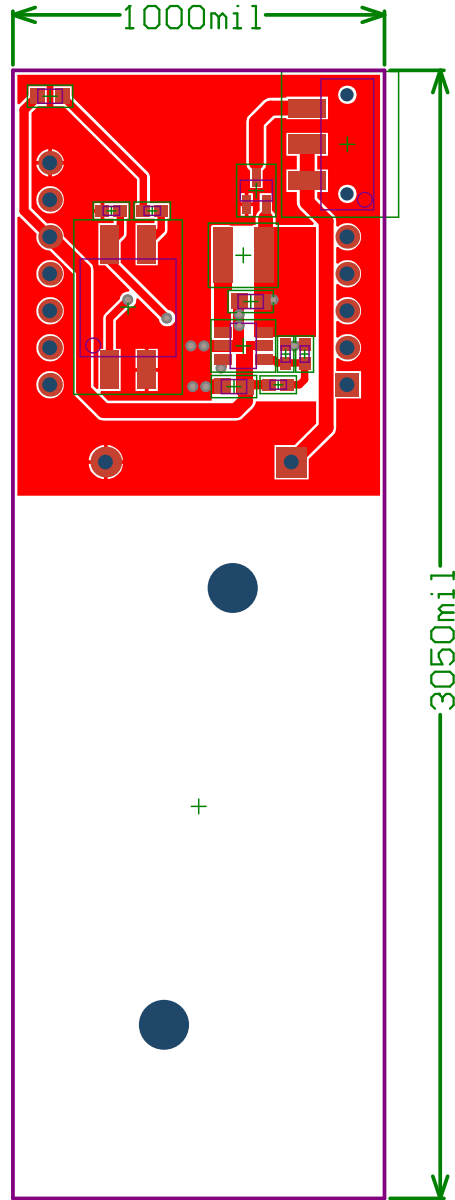
Pos	Description
1	Step-Up
	Reductor OFF
	Reductor ON
2	Power-LED OFF
	Power-LED ON
	Power-LED ON

LAYERS


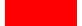
BOTTOM OVERLAY

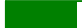

DIMENSIONS

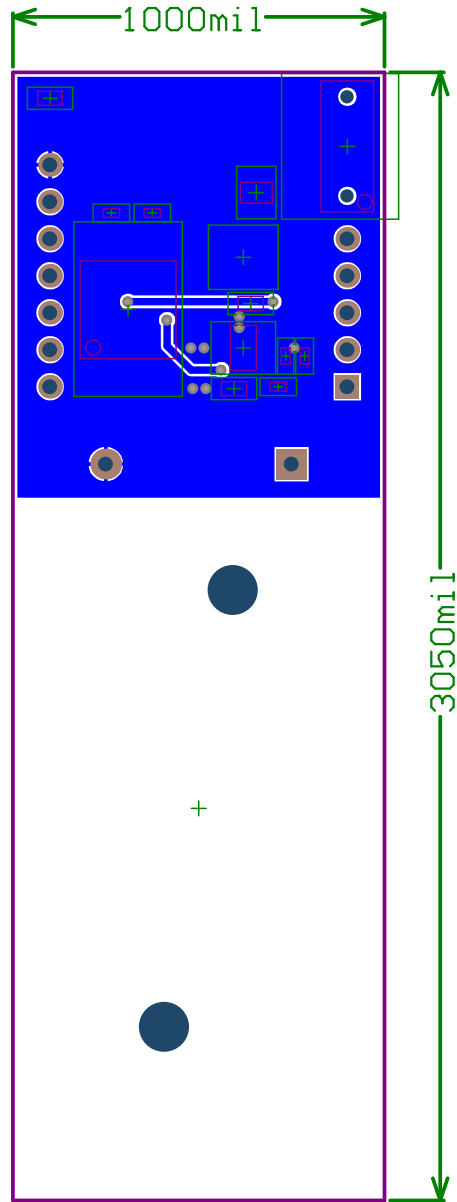
ROUTING KEEPOUT LAYER





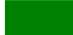

LAYERS

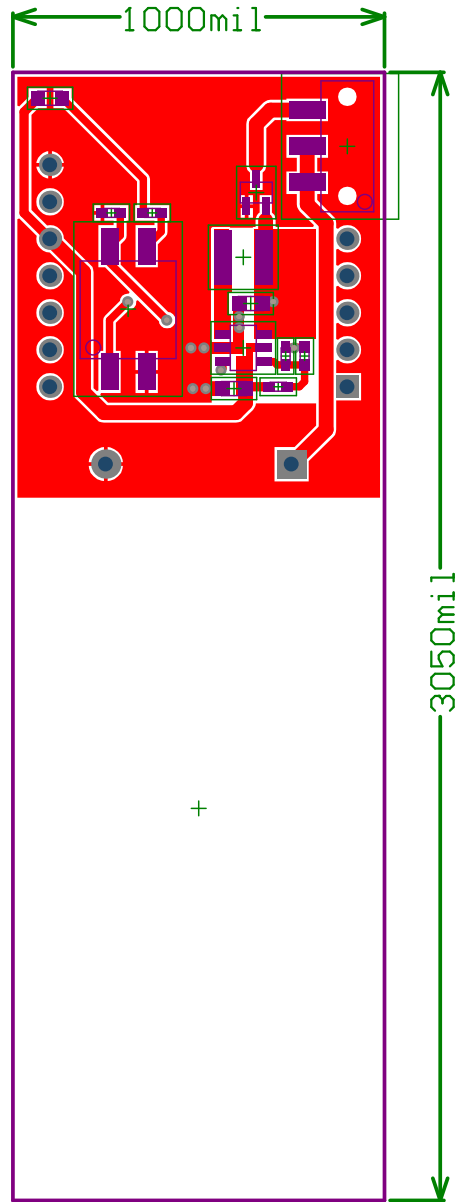
	TOP SOLDER MASK
	TOP COPPER

	DIMENSIONS
	ROUTING KEEPOUT LAYER



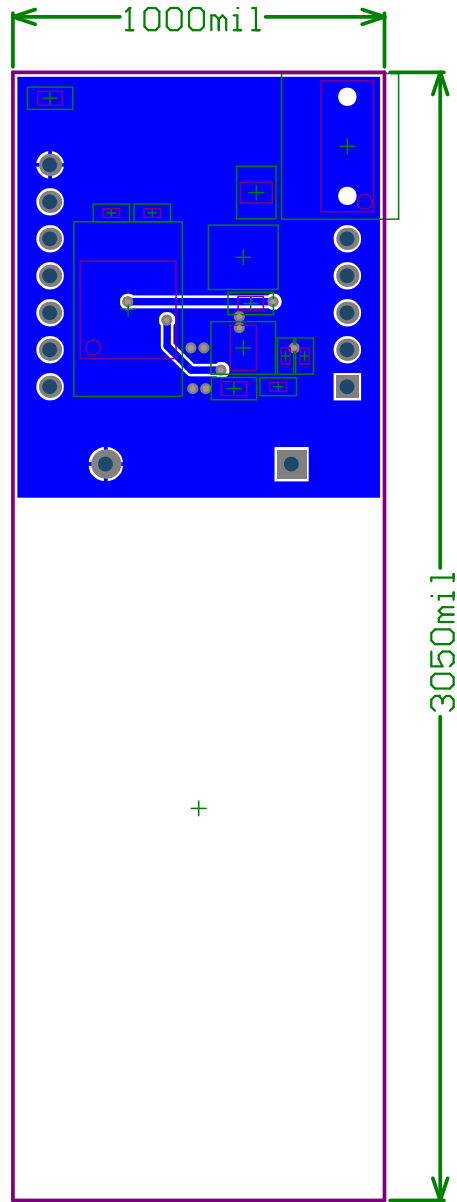
LAYERS

	BOTTOM COPPER
	BOTTOM SOLDER MASK
	DIMENSIONS
	ROUTING KEEPOUT LAYER



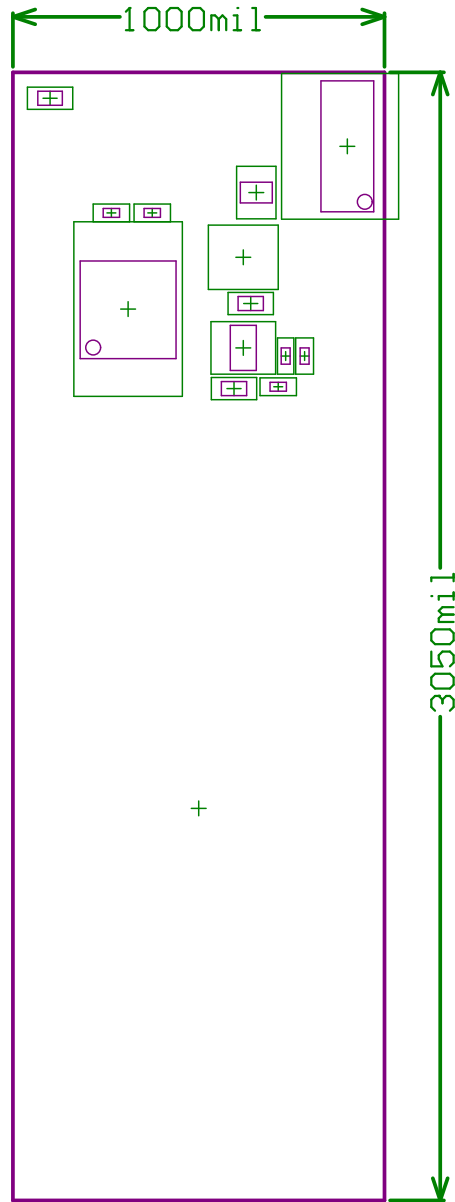
LAYERS

- TOP PASTE
- TOP COPPER
- DIMENSIONS
- ROUTING KEEPOUT LAYER



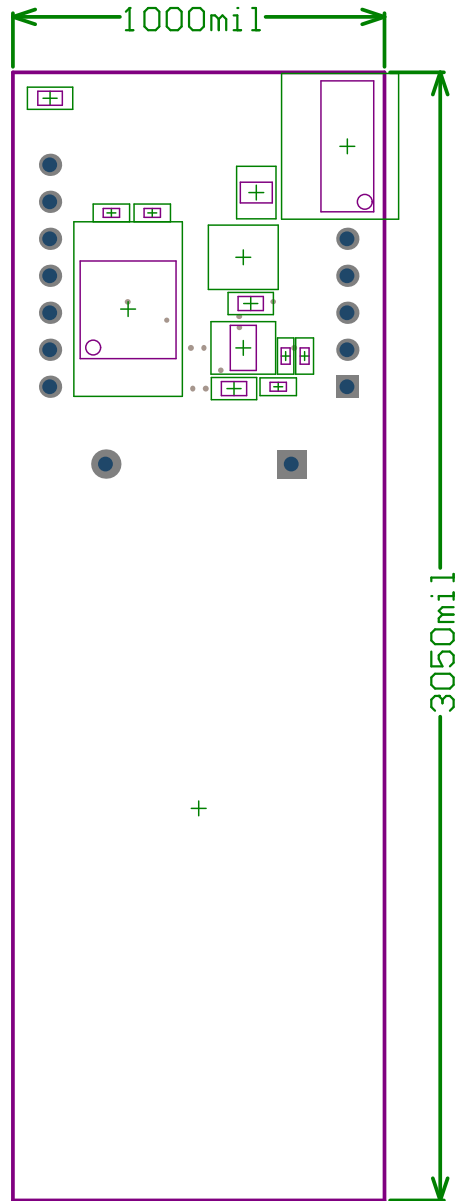
LAYERS

- BOTTOM COPPER
- BOTTOM PASTE
- DIMENSIONS
- ROUTING KEEPOUT LAYER

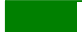



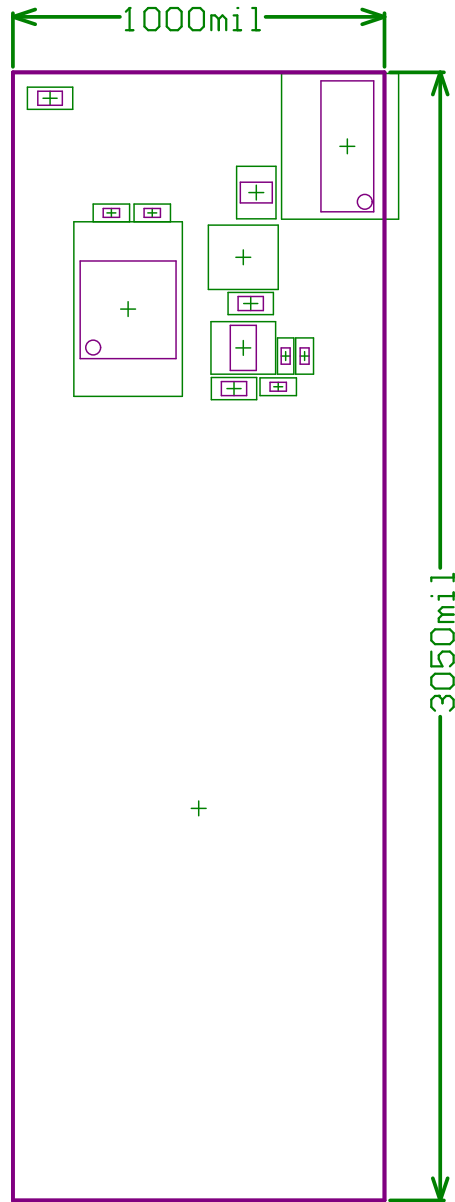
LAYERS

The legend consists of two entries: a green box labeled 'DIMENSIONS' and a purple box labeled 'ROUTING KEEPOUT LAYER'.



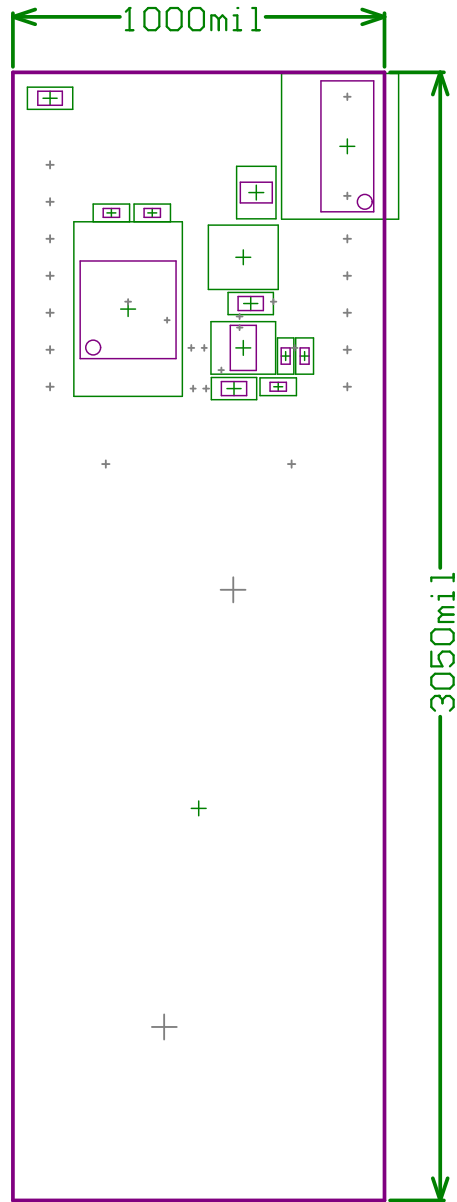
LAYERS

	DIMENSIONS
	ROUTING KEEPOUT LAYER






LAYERS

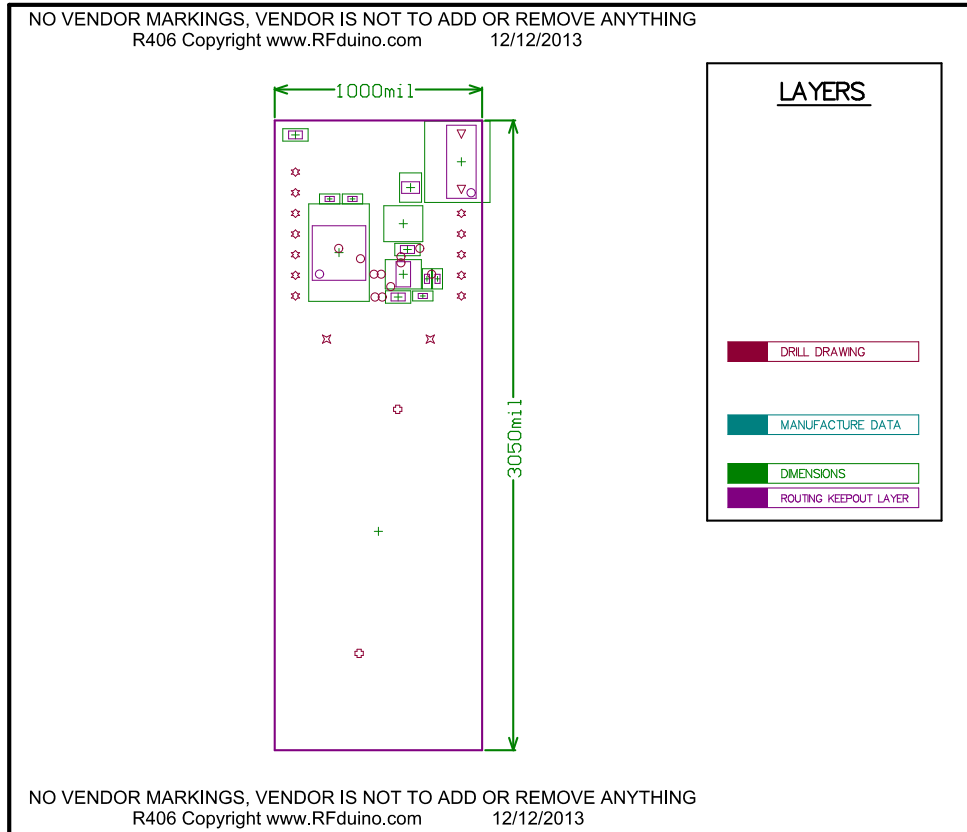
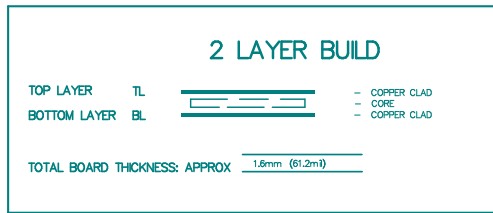
The legend consists of two entries. The first entry is labeled 'DIMENSIONS' and is represented by a green horizontal bar. The second entry is labeled 'ROUTING KEEPOUT LAYER' and is represented by a purple horizontal bar.



LAYERS

	DRILL GUIDE (SLOTS)
	DIMENSIONS
	ROUTING KEEPOUT LAYER

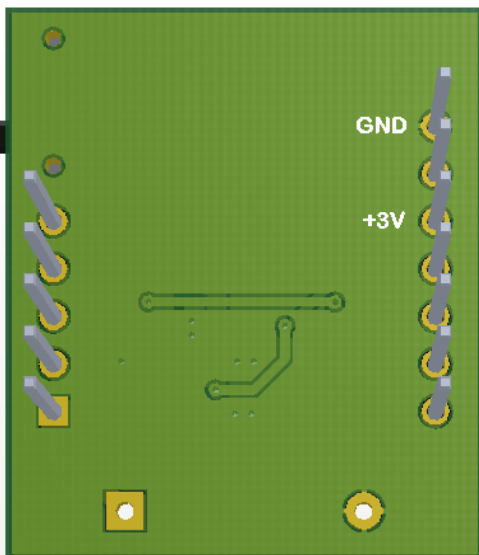
LAYER STACK CONFIGURATION



NOTES: UNLESS OTHERWISE SPECIFIED

1. MATERIAL: FR4
2. FINISH: BLACK GLOSS LPI SOLDERMASK OVER BARE COPPER, BOTH SIDES OF BOARD
ALL EXPOSED CONDUCTIVE PATTERN AREAS NOT COVERED WITH SOLDER MASK OR OTHER PLATING SHALL BE PLATED WITH IMMERSION GOLD
3. SILKSCREEN BOTH SIDES USING THE WHITE NON-CONDUCTIVE EPOXY INK,
SILKSCREEN INC NOT ALLOWED ON COMPONENT PADS
4. NO VENDOR MARKINGS OF ANY TYPE, ON ANY LAYER OF THE PCB
IT IS OK FOR VENDOR TO PUT MARKINGS ON THE RAILS OF THE ARRAY ONLY
5. IMPEDANCE CONTROL REQUIREMENT
6. FINISHED FAB AND WORKMANSHIP PER IPC-A-600, CLASS2
7. RoHS COMPLIANCE REQUIRED
8. ALL VIAS ARE TO BE FULLY PLUGGED WITH SOLDERMASK
9. IF THERE ARE ANY DISCREPANCIES, IT IS THE VENDORS RESPONSIBILITY TO CONTACT THE CUSTOMER
10. NO X-OUTS
11. 100% ELECTRICAL TEST FOR OPEN AND CLOSED REQUIRED

Symbol	Hit Count	Tool Size	Plated	Hole Type
○	11	15mil (0.381mm)	PTH	Round
▽	2	35.433mil (0.9mm)	PTH	Round
☆	12	40mil (1.016mm)	PTH	Round
⊗	2	40.157mil (1.02mm)	PTH	Round
⊕	2	135.827mil (3.45mm)	PTH	Round
29 Total				



SW2

Pos	Description	
1	<input type="checkbox"/> OFF	Step-UP Regulator OFF
	<input type="checkbox"/> ON	Step-UP Regulator ON
2	<input type="checkbox"/> OFF	Power-LED OFF
	<input type="checkbox"/> ON	Power-LED ON