

EVO Zone Expanders



RTX3

Wireless Expansion Module

► Features

- 32 wireless addressable zones
- Maximum number of remote controls: 999 with EVO (32 with SP)
- Remote control compatibility:
 - REM1, REM2, REM3, REM15, REM101, RAC1, and RAC2 remote controls
- Supports wireless PGMs (8 with EVO, 16 with SP Series only)
- Supports SR150 and SR130 Wireless Sirens (SP Series only)
- Supports all MAGELLAN transmitters including 2WPGM
- Supports 2 RPT1 and 8 K32RF / K37 (SP Series only)
- RF jamming supervision
- Low battery, tamper and check-in supervision for reconnected modules
- Transmitter signal strength display
- 3 PGM outputs and 1 optional output
 - PGM outputs: PGM1 and PGM2 - 150mA PGM transistor outputs
 - PGM3 and PGM4 - form C relay output rated at 5A / 28Vdc, N.O. / N.C. (PGM4 optional)
- In-field firmware upgradeable via 307USB

► Specifications

Input Voltage	9 to 16 Vdc
Current Consumption	50 mA
RF Frequency	433 or 868 MHz
Sensitivity	-120 dBm
Humidity	5 to 90%
Operating Temperature	0 to 49 °C (32 to 120 °F)
Dimensions	15 x 16 x 3 cm (6 x 6,5 x 1,1 in.)

EVO Access Control Control Module



ACM12

4-Wire Access Control Module

► Features

- Full Off-Line functionality
- Fast x10 access processing of up to 999 users
- In / out access control via two readers or reader and REX
- Access with card / pin or both
- Arm / disarm function with card / pin or both
- RS485 reader connection up to 300m / 1000 ft
- Force door, door left open detection / alarm
- Firmware upgradeable
- Easy, minimum fast programming
- 4 (total of 8 periods) unlock schedules
- Manual Door Unlock
- Unlock door on Fire Alarm

► Specifications

Input Voltage	16 Vac, 20 / 40 VA, 50-60 Hz
Auxiliary Output	12 Vdc, typical 600 mA, 1A fuseless shutdown
Battery	12 Vdc, 4 Ah minimum
Metal Box	Fits in a 20 x 25.5 x 7.6 cm (8 x 10 x 3 in.) metal box
Dimensions	14 x 9,2 x 2,5 cm (5,5 x 3,6 x 1 in.)



EVO Access Control Card Reader & Keypad



R915

4-Wire Sealed Indoor / Outdoor Proximity Reader and Keypad

► Features

- Only 4 wires (instead of 7) to connect with 4-wire access control modules
- Adjustable red / green LED intensity and buzzer frequency
- Extreme weather-resistant design (injected rubber gasket and PCB cover)
- Available in 3 colors: white, silver, or black

► Specifications

Same specifications as the R910 (see below), except for the following:

Current Consumption	60 mA
Frequency	Exciter field at 125 kHz Pulse Modulated
IP Rating	IP65
Dimensions	14,4 x 15,2 x 2,5 cm (1,7 x 6 x 1 in.)



EVO Access Control Proximity Card Reader



R910

4-Wire Indoor / Outdoor Proximity Reader

► Features

- Only 4 wires (instead of 7) to connect with 4-wire access control modules
- Adjustable red / green LED intensity and buzzer frequency
- Extreme weather-resistant design
- Tricolor LED display
- Also available: 910WP gang plate covers
- In-field firmware upgradeable via CV4USB and BabyWare

► Specifications

Input Voltage	11 to 14,5 Vdc
Current Consumption	Typical: 100 mA With Card: 115 mA maximum
Frequency	Exciter field at 125 kHz Pulse Modulated
Operating Temperature	-35 to 65 °C (-31 to 149 °F)
Dimensions	5,5 x 15 x 2,5 cm (2,2 x 5,9 x 1 in.)



EVO Access Control Remote Controls with Integrated Access Card



RAC1

Remote Control with Integrated Access Card

► Features

- Performs up to 5 different system actions
- Built-in access card; present remote control to a reader like an access card
- Water resistant, clear blue plastic with backlight for buttons

► Specifications

RF Frequency	433 or 868 MHz
Battery Type	3V lithium battery (CR2032)
Wireless Range	Typical residential environment 60m (200 ft) with RTX3 (EVO) 30m (100 ft) with MG6250 45m (150 ft) with MG5000 / MG5050
Operating Temperature	0 to 50 °C (32 to 120 °F)
Humidity	5 to 90%
Dimensions / Weight	6 x 4,3 x 2 cm (2,3 x 1,7 x 0,8 in.) / 30g (1,06 oz)

EVO Access Control Proximity Cards



C702

Standard Proximity Card

► Features

- Convenient credit card size
- Super-thin and flexible
- Durable PVC housing (white)
- Passive (no battery required)
- Dimensions: 8,6 x 5,4 x 0,2 cm (3,4 x 2,1 x 0,08 in.)

► Feature specific to C702

- Vertical slot for clip attachment

► Features specific to C706

- Can have vertical or horizontal punch slot
- Suitable for dye-sublimation printing of images, photos, and text

C706

2-Sided High-Gloss ISO Proximity Card

EVO Access Control Proximity Key Tags

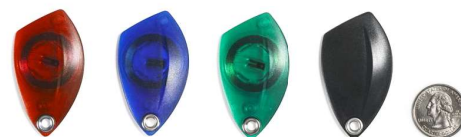


C704

Blue Proximity Key Tag

► Features

- Attaches conveniently to a key ring
- Durable clear blue plastic housing
- Passive (no battery required)
- Dimensions: 3,5 x 3,8 x 0,5 cm (1,4 x 1,5 x 0,5 in.)



C705

Translucent Proximity Key Tag

► Features

Same features as the C704 along with the following:

- Available in a variety of colors: Blue, Red, Green and Black
- Dimensions: 3,2 x 5,6 x 0,8 cm (1,3 x 2,2 x 0,3 in.)