
P2P IPCAM User Manual

(For Windows OS)

IP camera User Manual

Our products penetrate the P2P technology, such as computer plug and play with networking so it makes Telecom, China Netcom, 3G smooth exchange of visits, which achieve Internet Interworking ideal target.

Note: The picture is for reference only.

1. Hardware Installation

- 1.1 Open the package and take the ip cam and accessories out, First install the ipcam wireless antenna



- 1.2 Fix the ip camera, insert one end of the network cable to the camera tail Ethernet card interface, on the other end of the RJ45 network interface connected to a router or switch..



- 1.3 The software of IP Camera support windows XP/Vista/windows7 etc. operation system, Pls use the power adapter to connect the DC5V port on the back of the ip camera. Plug the other end to an electrical outlet. Check the card's power indicator light (yellow) and the network indicator (green) is working properly, the camera pan and tilt rotate automatically..



2 .Software Installation

- 2.1Please insert CD into your computer's CD-ROM driver, it will operate automatically, if not, pls double click the "autorun.exe" ,the file can be opened.

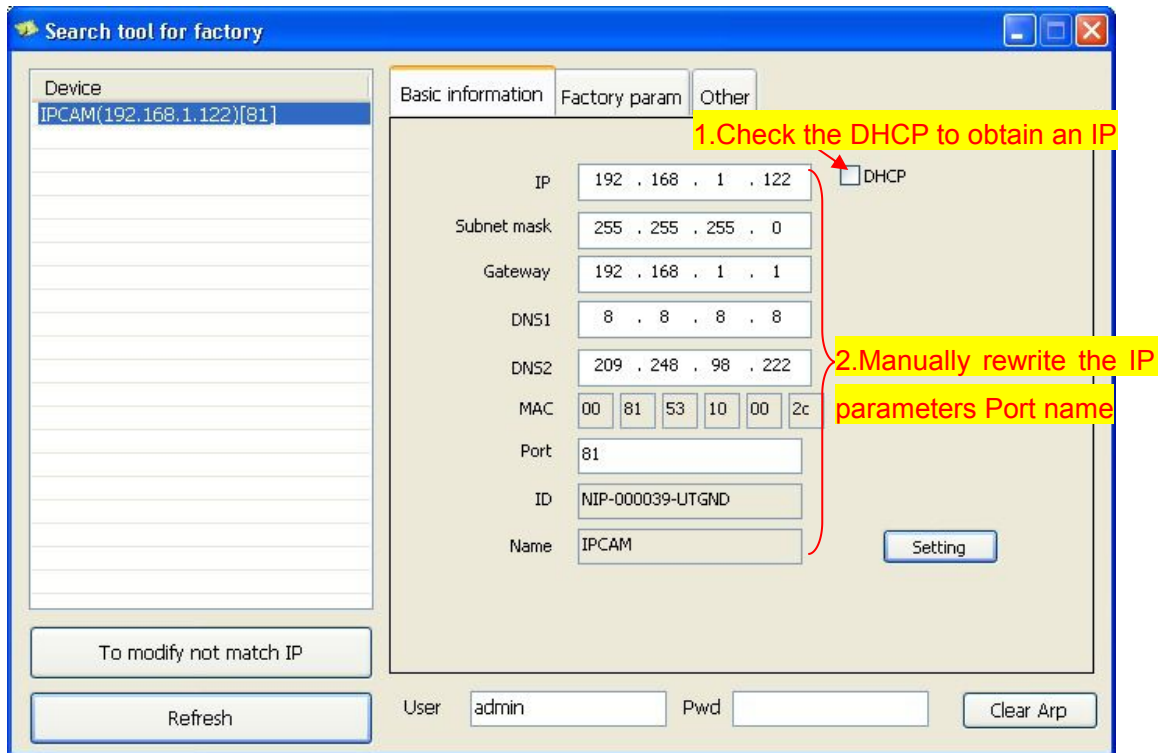


Click "search.exe", Follow the tips , LAN tool is installed into the system and generated

on the desktop "IP Camera Search " 

•2.2 Search the device and login

The LAN run search tools "IP Camera Search", the program will find the network cameras and displays the search to the IP address, port number, the name. If WIFI wireless connected, it will display the IP address of the wireless. As shown,

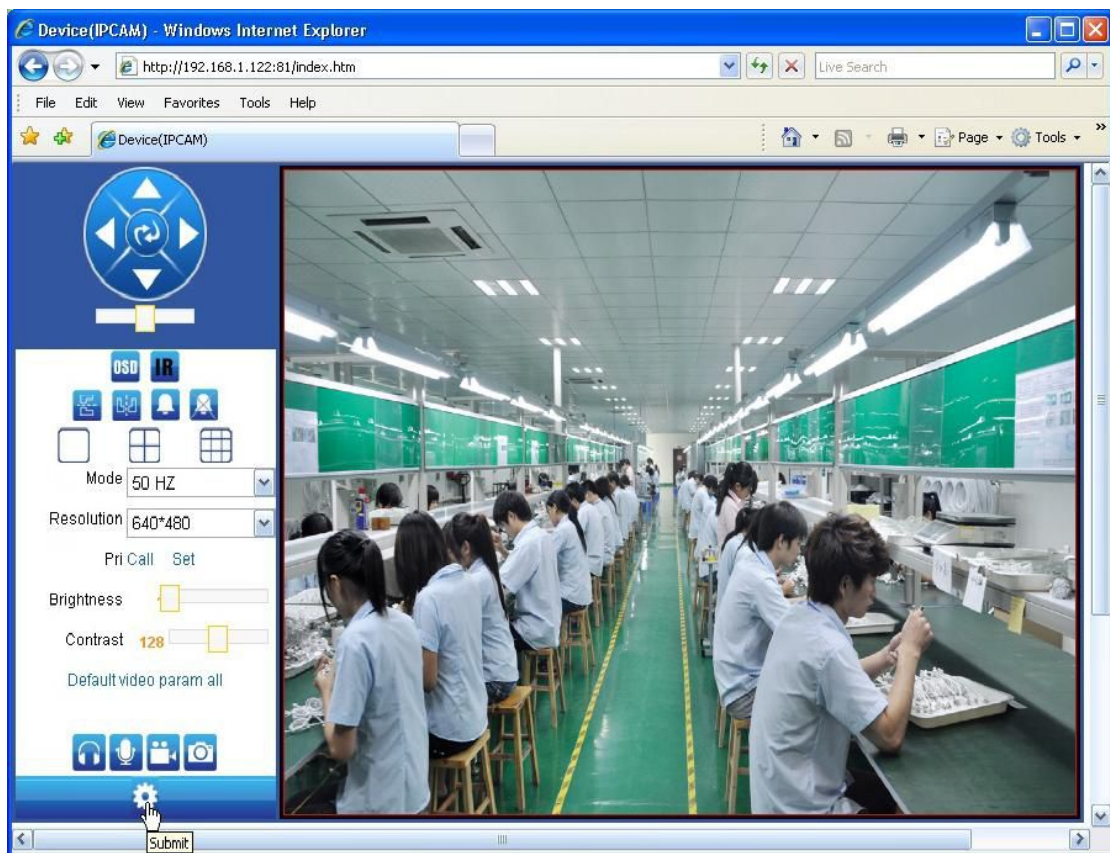
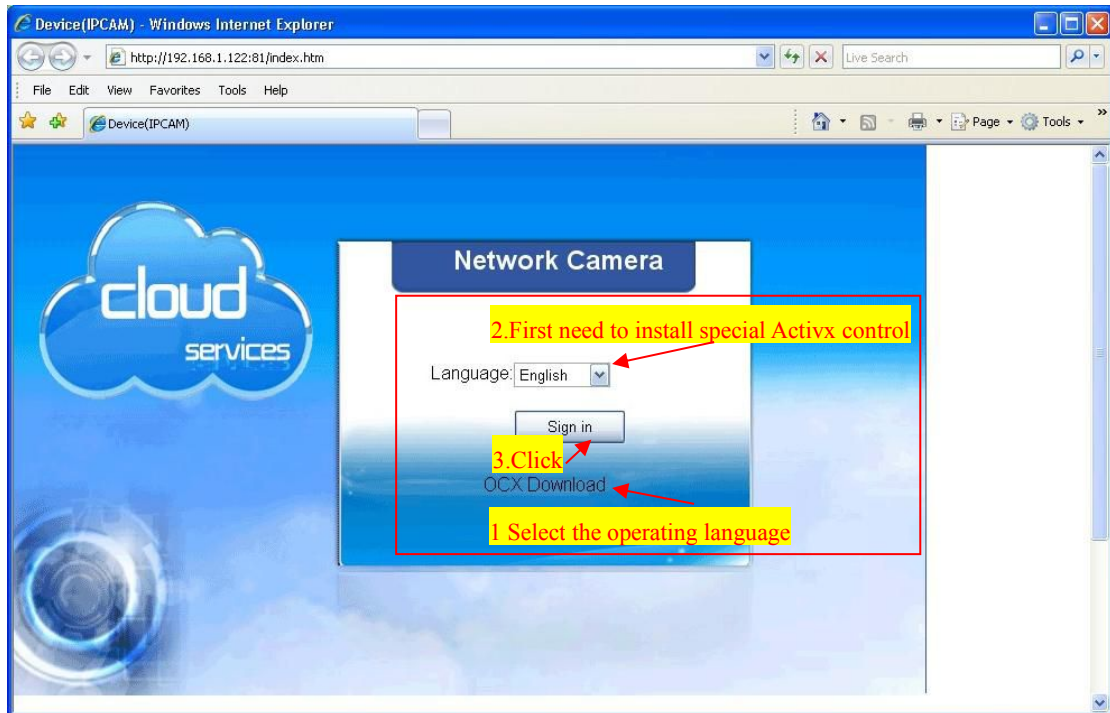


To select Basic information can change the parameters, click Set to save the changes

•and enter the IP address directly open the login authentication page (for example, enter: http://192.168.1.122: 81)to open the login screen as shown below shown,



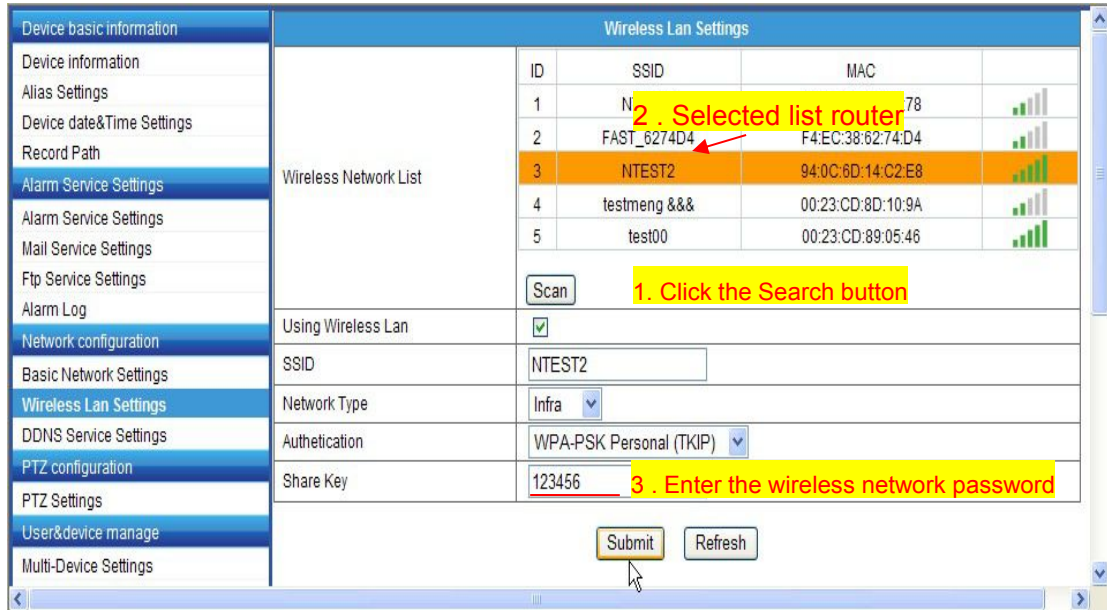
•After entering the correct user name and password and click "OK" to open the monitor screen click on the appropriate browser model.



2.3 Wireless network settings

Tick in the " wireless LAN " behind . You want to connect to and select SSID , the

input selection SSID password , as shown below:



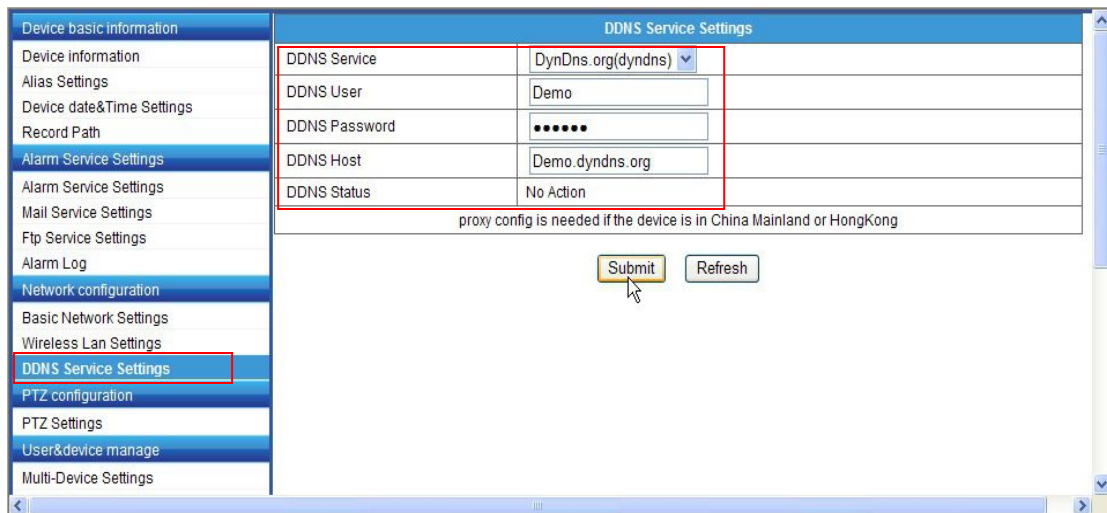
2.4 DDNS settings

ipcam(DDNS built-in) no need settings

Select service providers: Please select a server of the service provider, such as : dyndns.org、3322.org、365home.org

Application domain address: Fill in the user application domain address, as shown below:(Demo.dyndns.org)

User name and password: fill in the the DDNS account number and password, if you use the ipcam domain name, you can find the username and password in the camera tab: DDNS account and password.

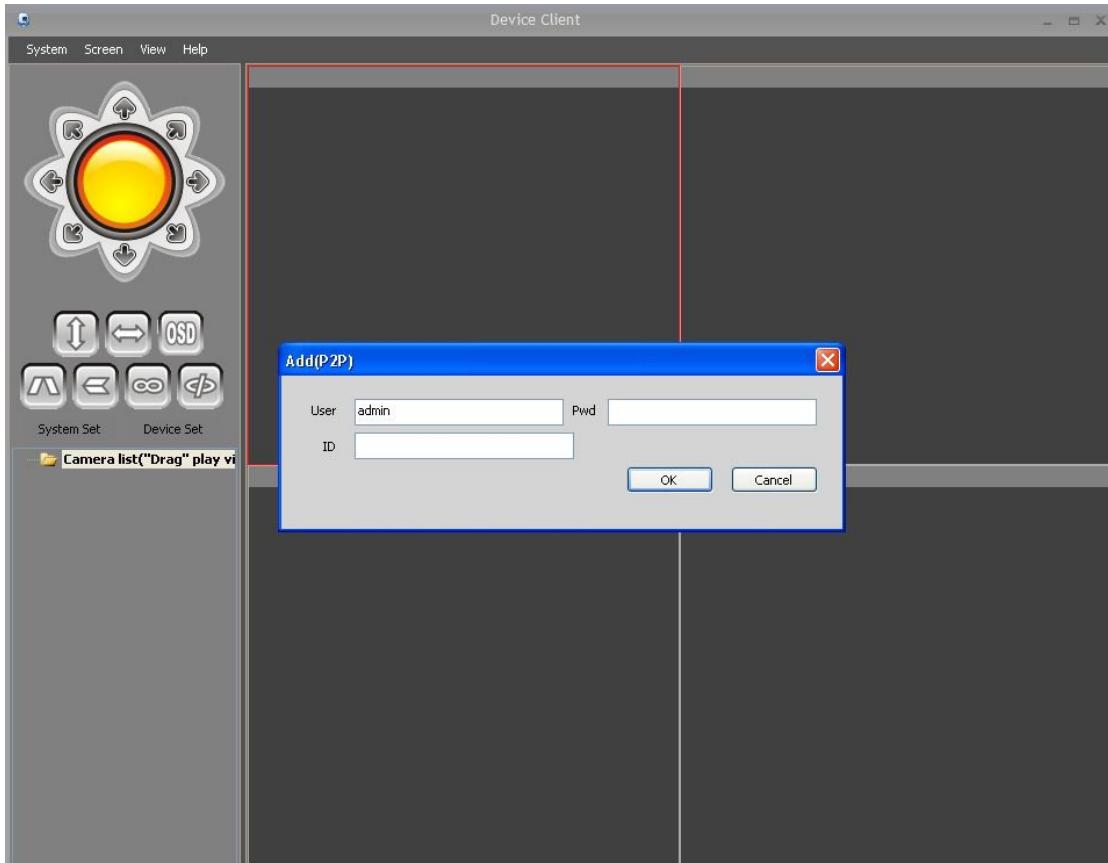


Extranet landing camera simply in the browser address bar and transportation equipment DDNS domain name address plus port number of the camera you can access the IP camera !

3. Installation plug-and-play software

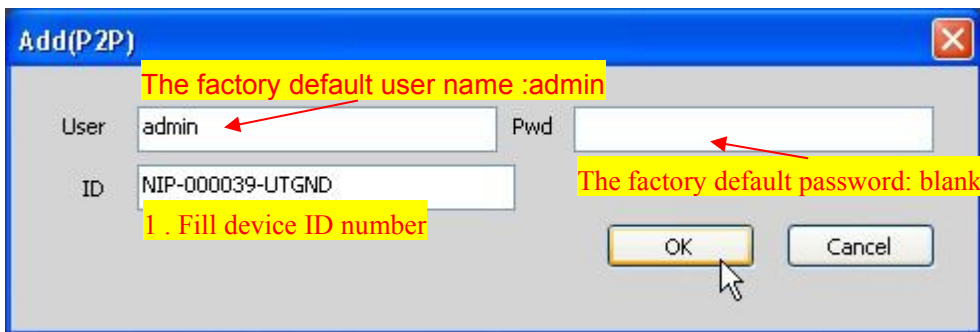
Install the plug and play software DeviceClient  ,After installed, the icon will display on the screen, click to open it to view. Click "Devices list"  ,Double-click search

camera ID Online to add LAN camera in the pop-up box click "Open search interface

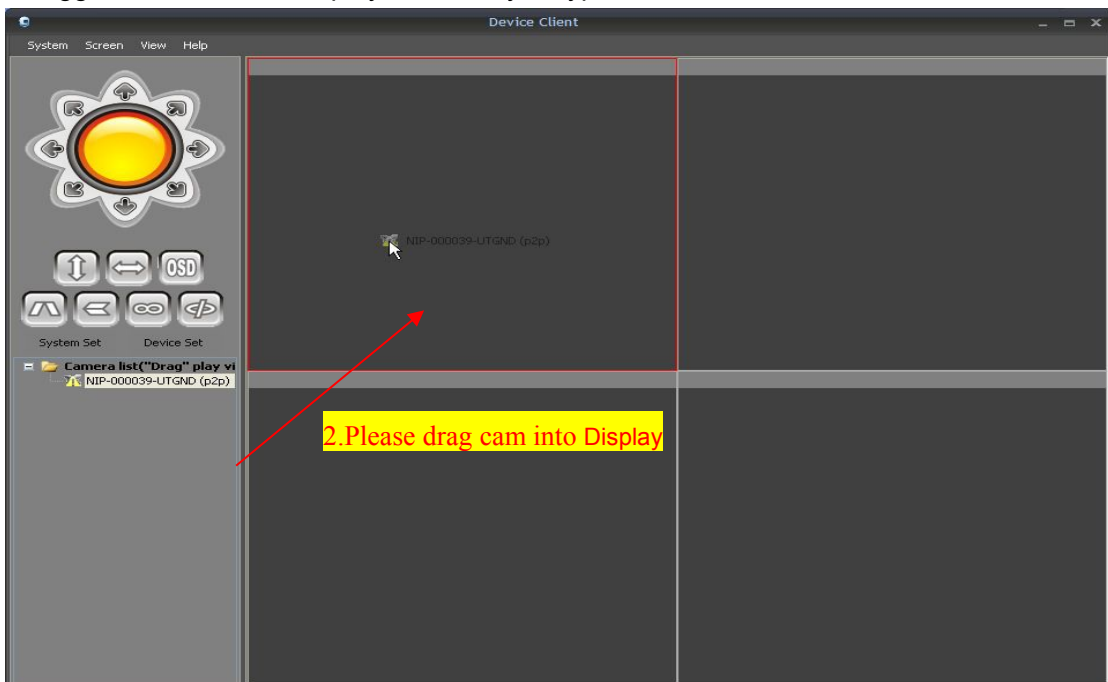


3.1 Add cameras

·Enter an ID number



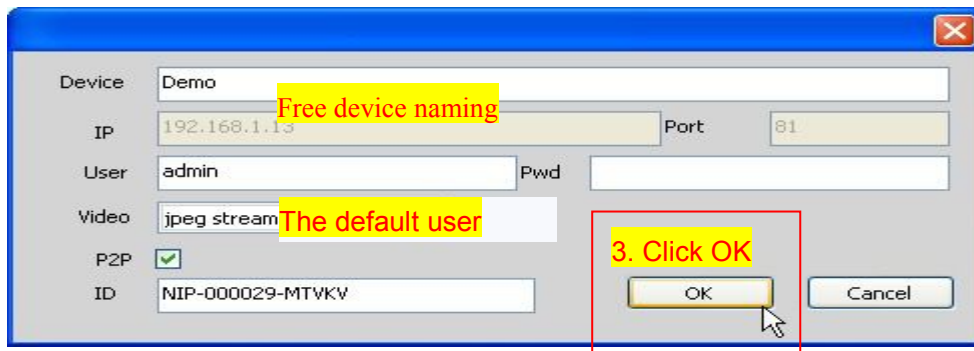
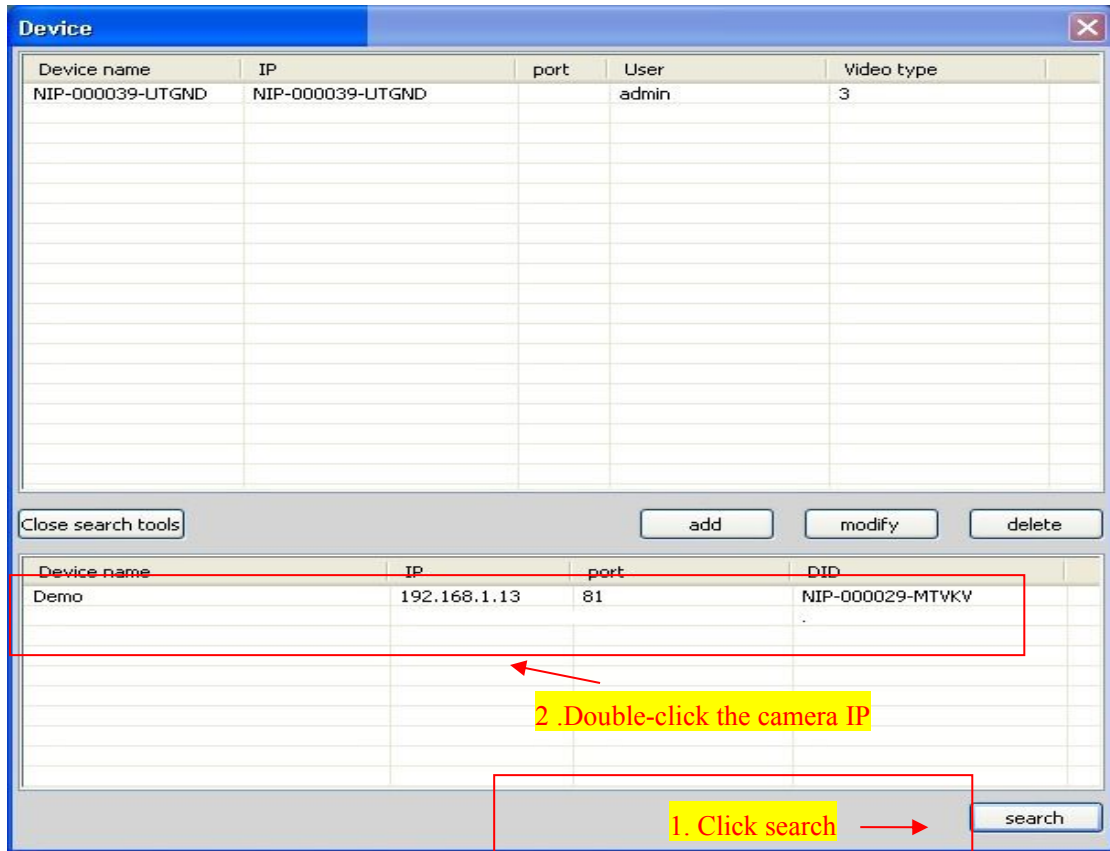
·Dragged the device to display box after you type the ID ect.



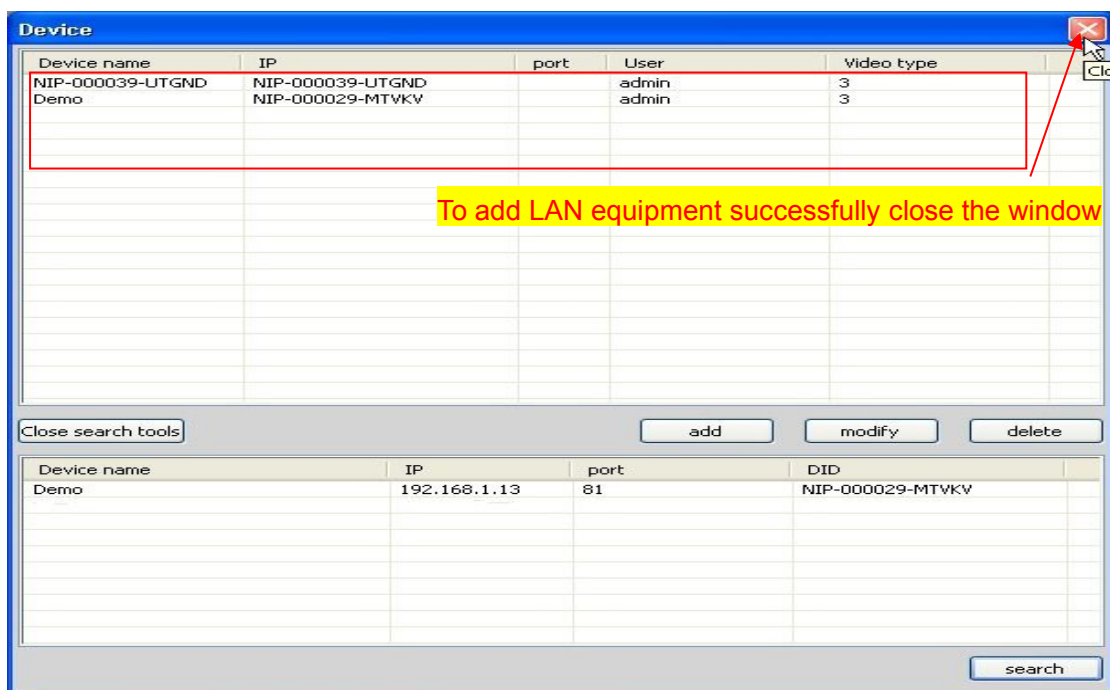
·Now we can see it as below.

- Double-click the camera ID search to add LANcamera after click "Open search

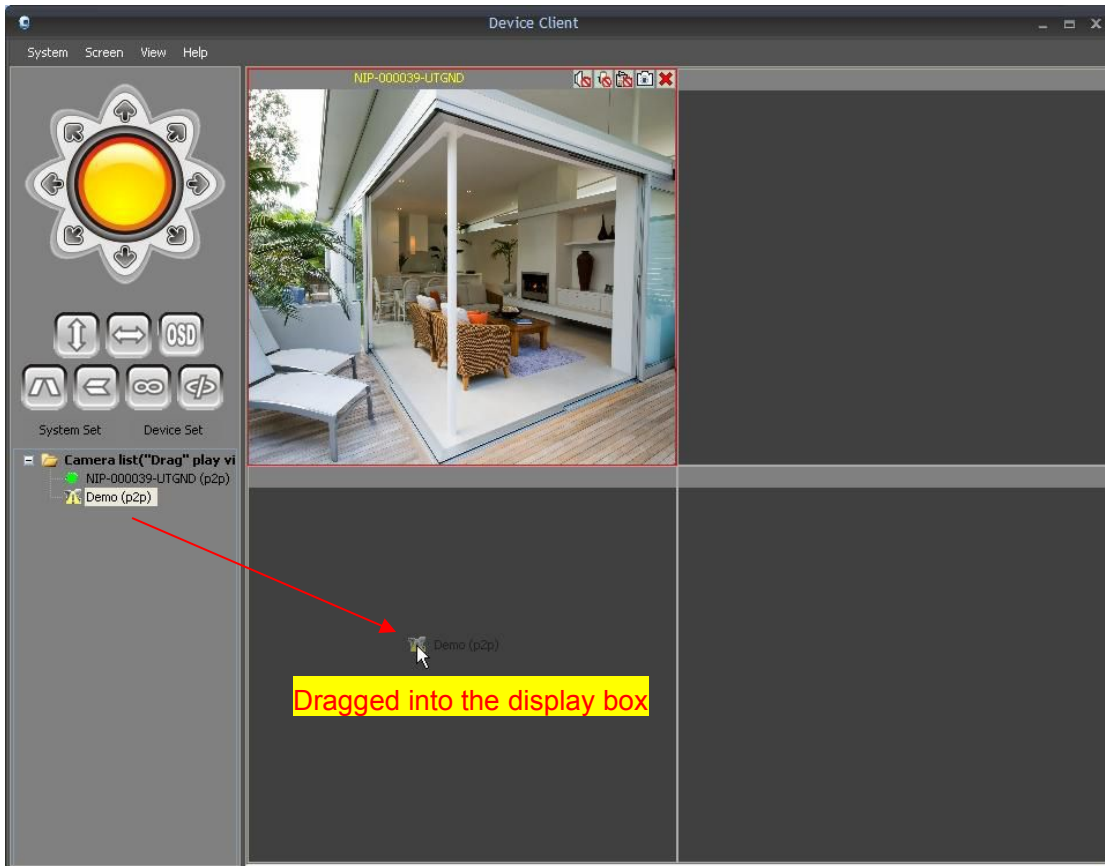
interface Open search tools



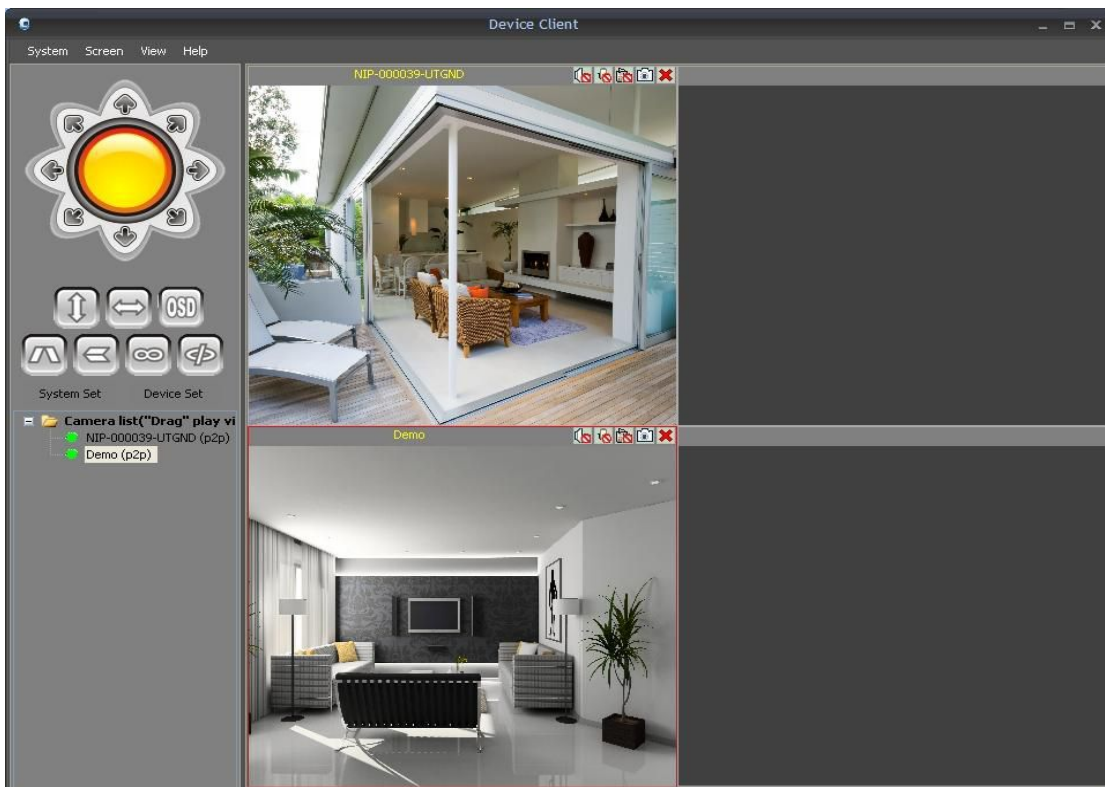
3.2.2 LAN equipment successfully added



·Turn off the window , return interface

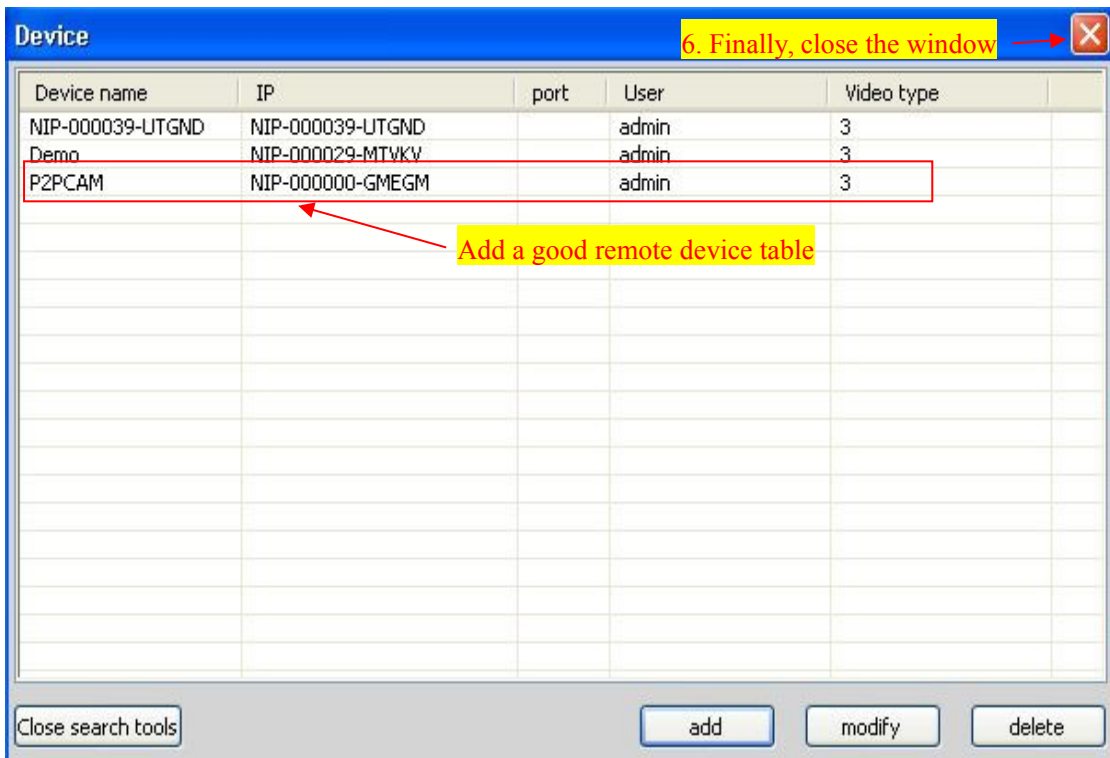
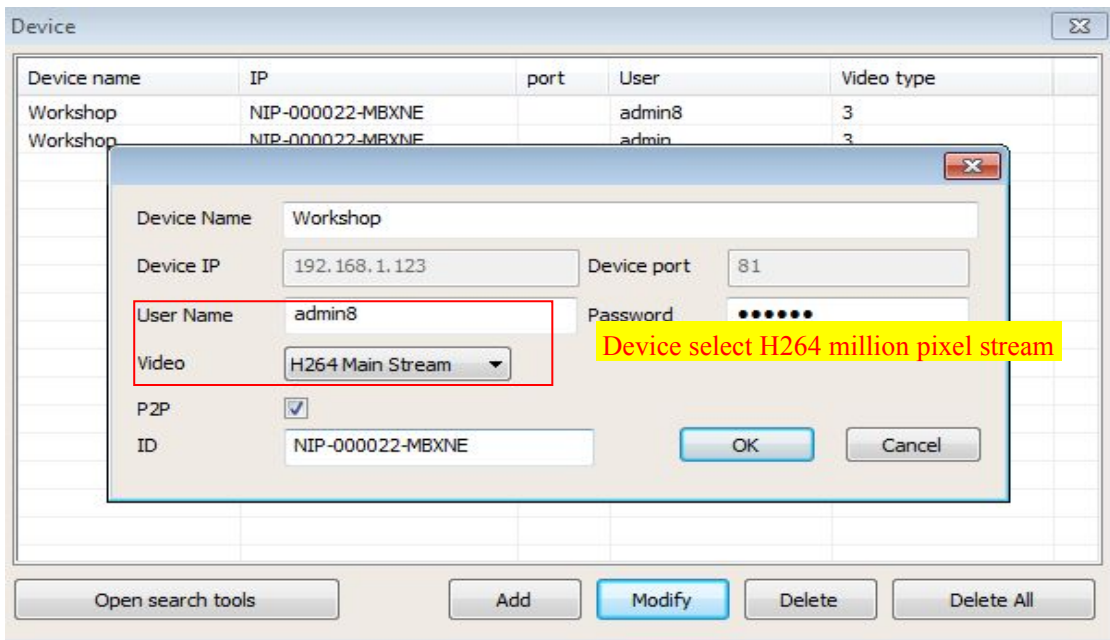
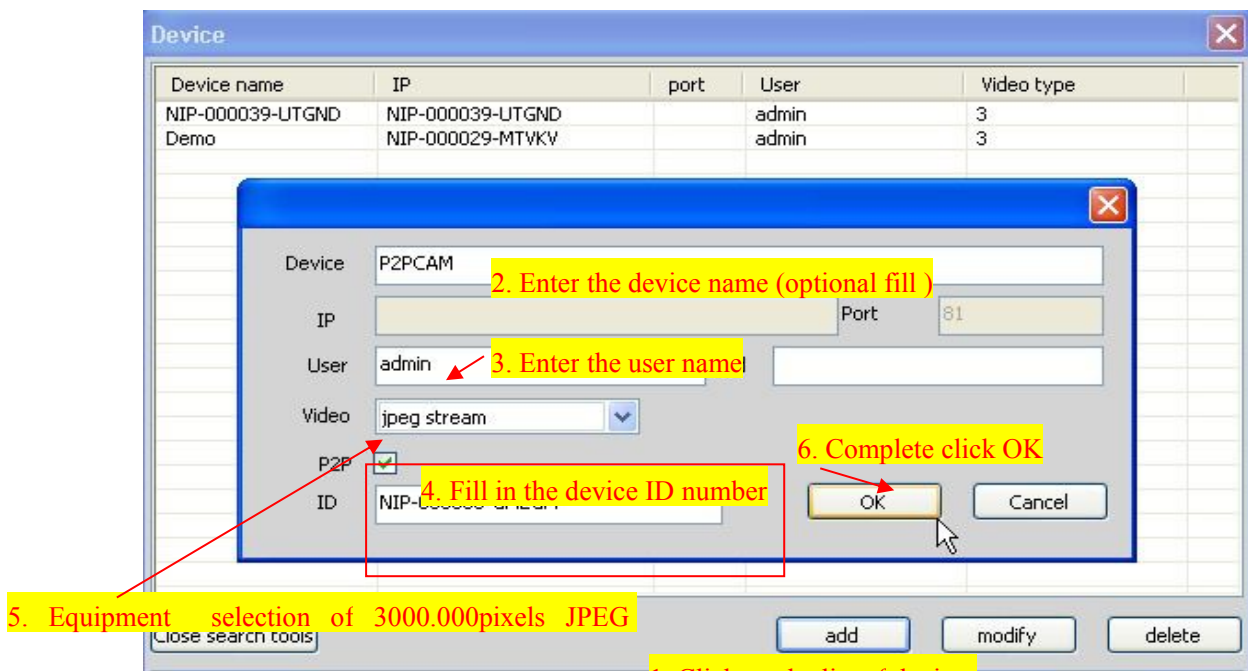


The monitor screen is displayed :

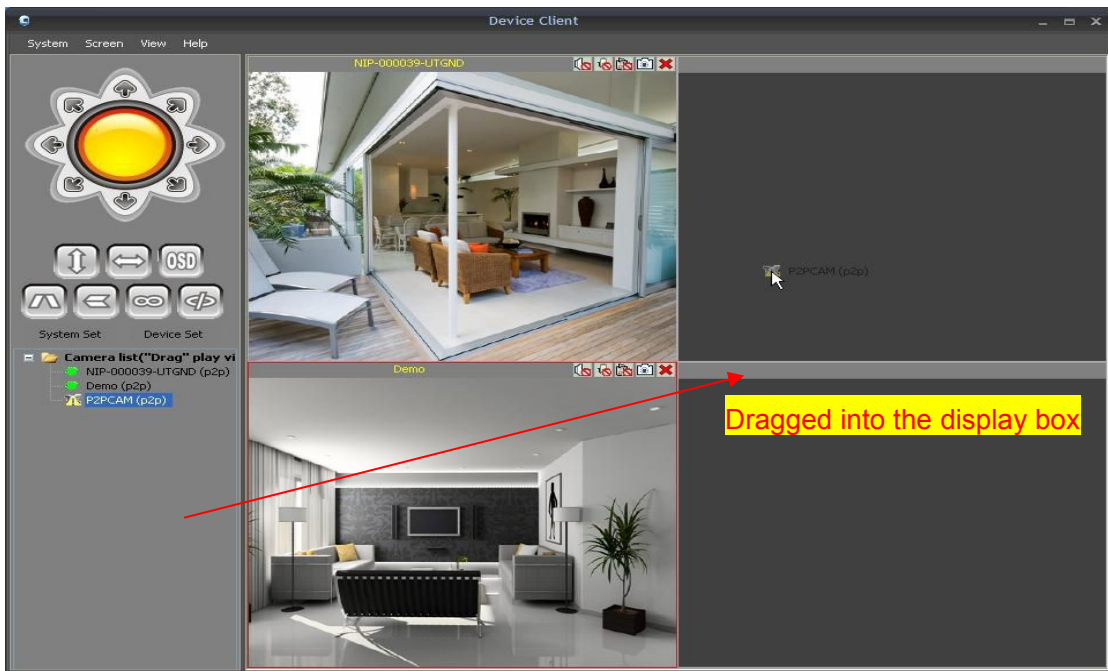


3.3 Add camera in WAN

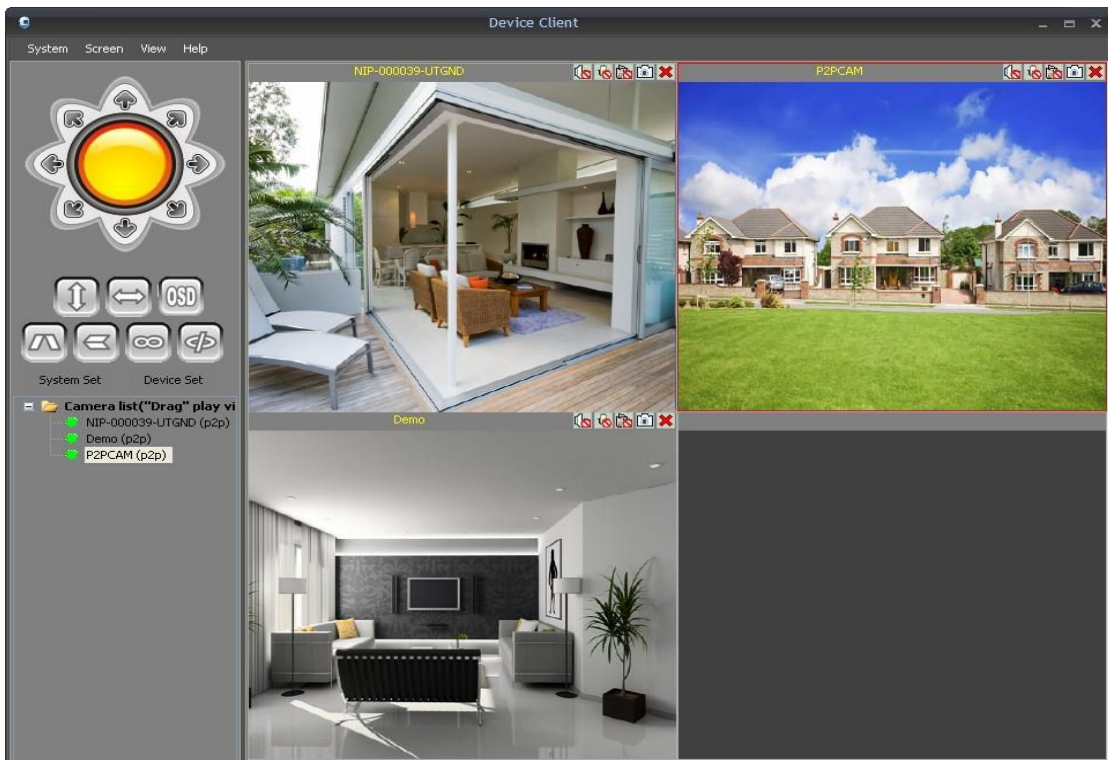
·Click " Add " button , input the ID number of the device and related information , as shown below process :



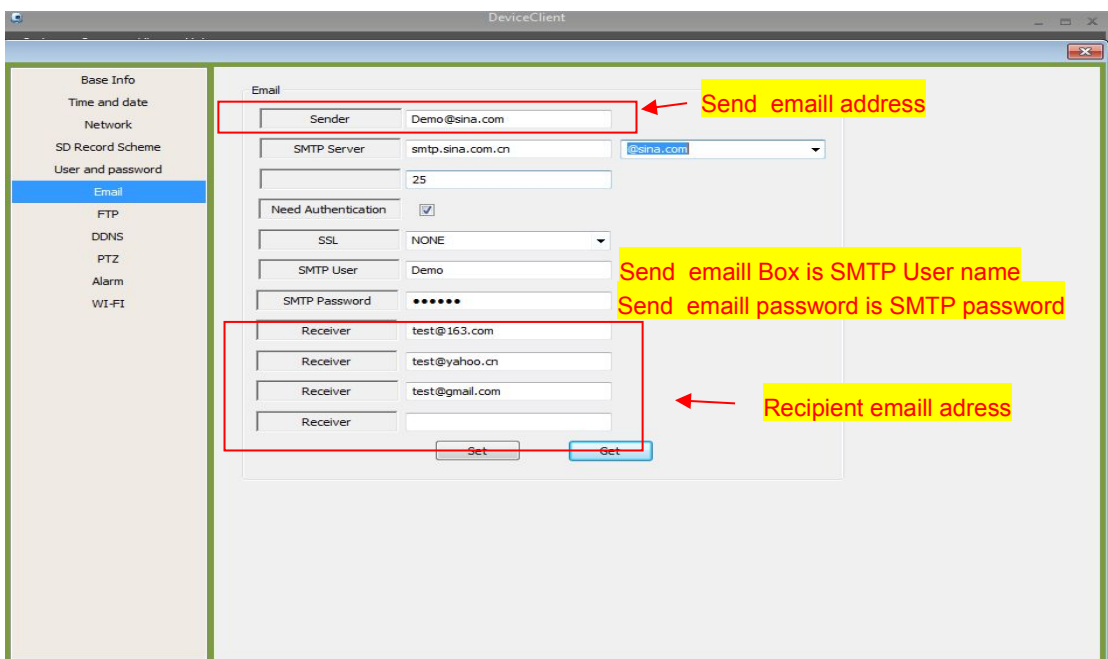
3.3.1 Remotely device is added successfully



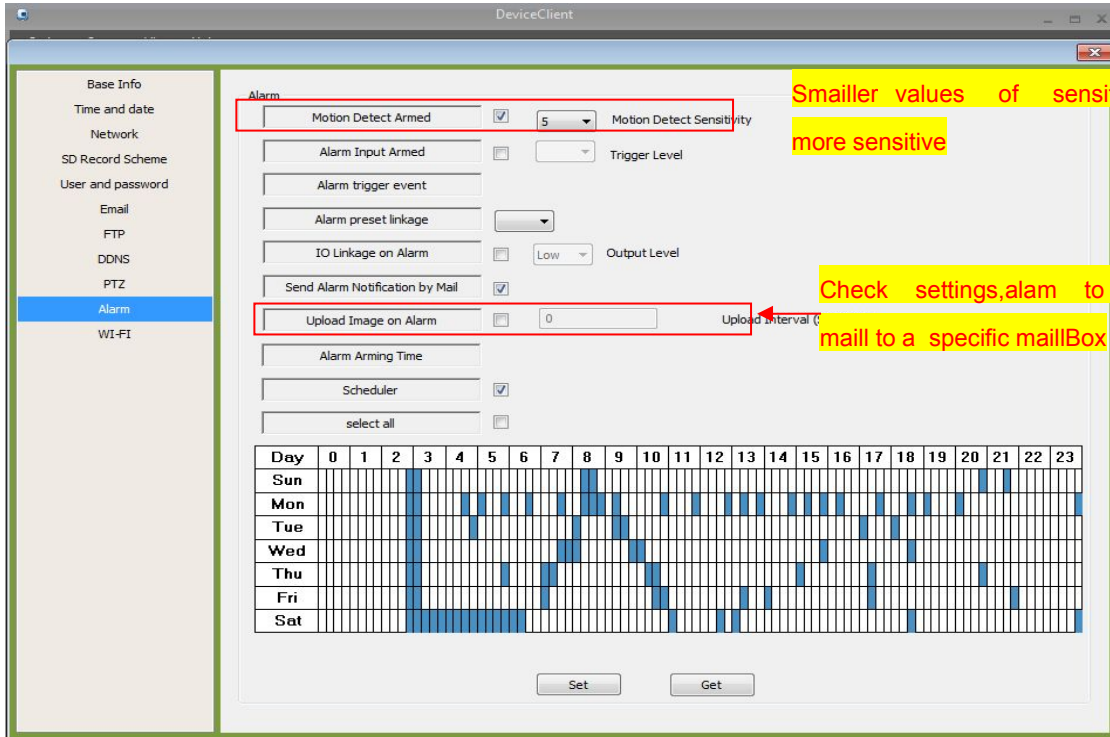
View all video :



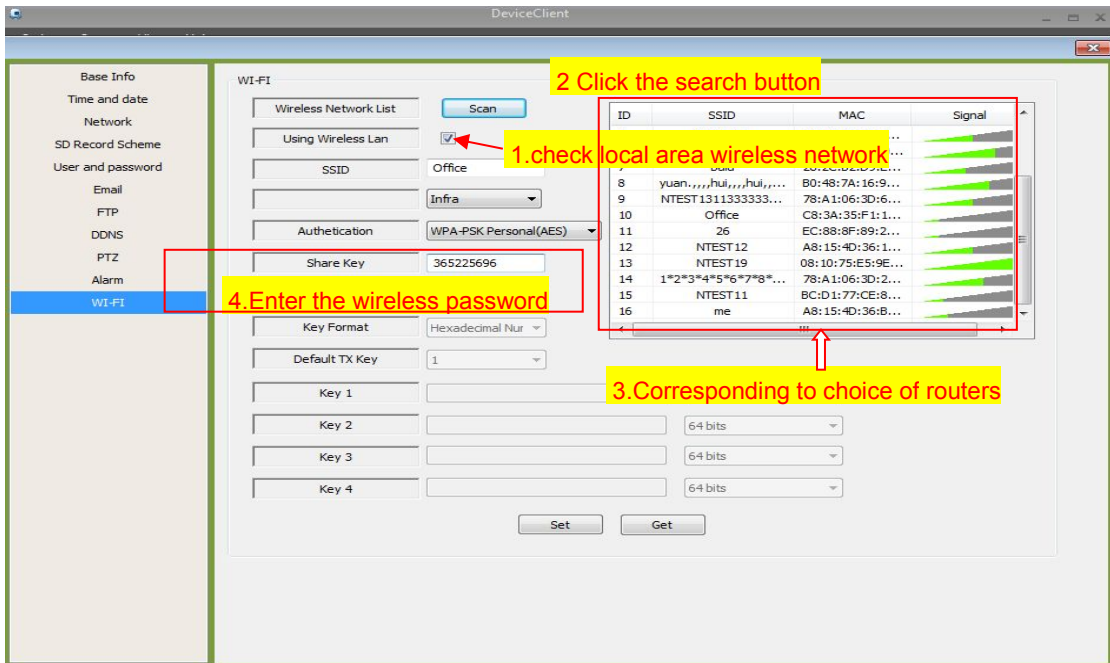
3.3.2 MailBox settings



3.3.3 Alarm setting



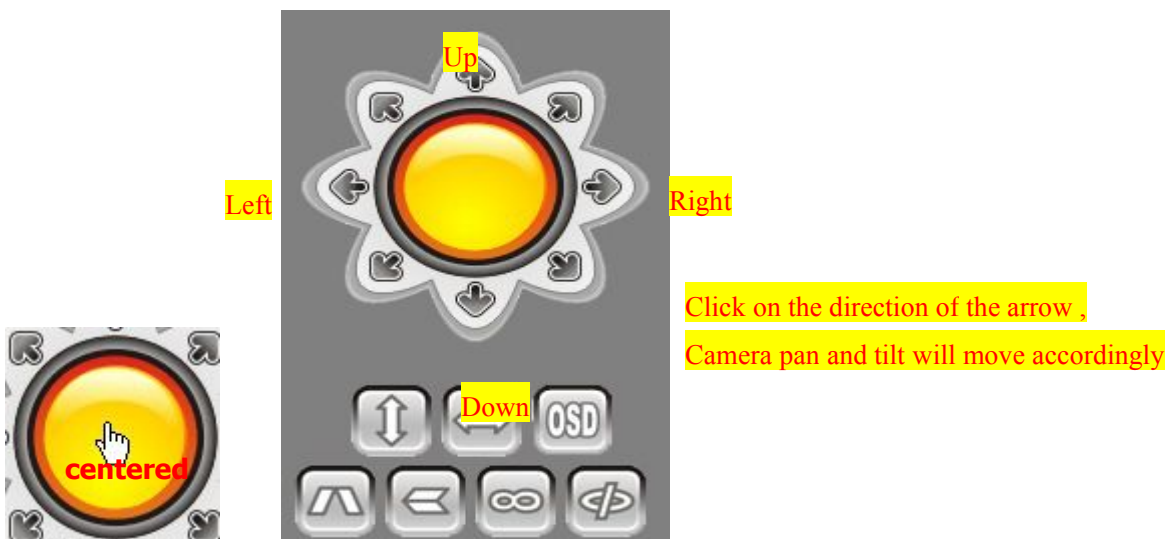
3.3.4 WIFI setting



3.4 The interface function







3.4.1 PTZ control

(Note : This feature is available only with the head of effective models)



Description (from left to right) :








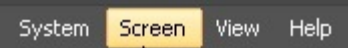
1.  Up and down cruise
2.  right and left cruise
3.  Left reversed
4.  Upside down
5.  Alarm switch is closed
6.  Alarm switch opens

3.4.2 Video control

Function Description:



1.  On / Off monitor voice
2.  On / Off intercom
3.  Video
4.  photo
5.  Close the video window
6. Multi-device Centralized monitoring

Click screen button  to select the picture displayed on the same screen

