



## Low-Power WIFI Battery Device Quick Start Guideline

its own intelligent detection algorithm effectively reduces false positives



smart power saving, long standby, 2pcs 2300mAh original 18650 battery, normal use 8-12 months



No obstacle about 80 meters, with wall about 15meters



from wake up to seeing images within 3 seconds, message push within 1 second



first company in the industry can do that users can still receive news pushes when the APP exits the background, solving the current industry pain points on the market.

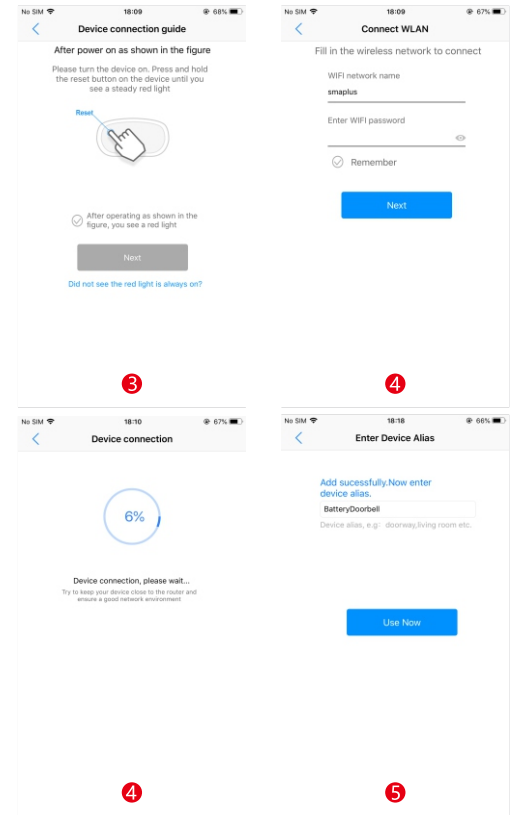
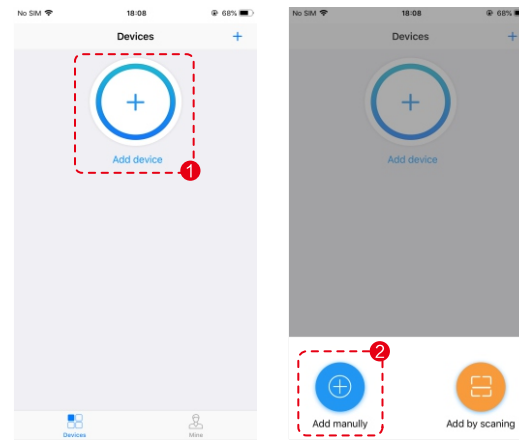


Simple operation: device configuration only in 2 steps



### ● SETUP DEVICE

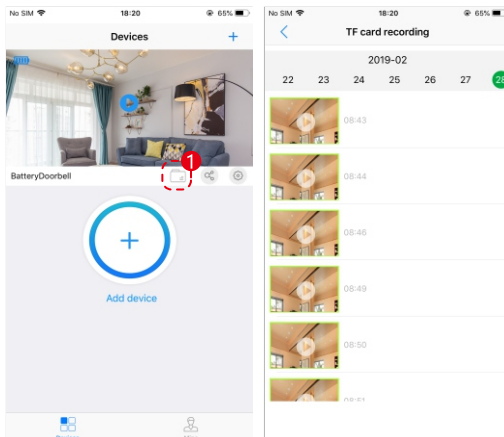
Download "Onecam" via "Google Play" / "Apple store", open the APP (to receive all notifications, please allow all notification rights), then register and log in to the app. Click on the "+" of the app and select Add manually to proceed to the next step.



The device is powered on. Wait for the device indicator to be steady red. (If the indicator is not steady red, please wake up the device by pressing the reset button. When the indicator is steady red, release the reset button.) Click "Next step"; follow the instructions of the APP until the status of the light changes to blue light flashing, indicating that the device is successfully connected to the network and can be used.

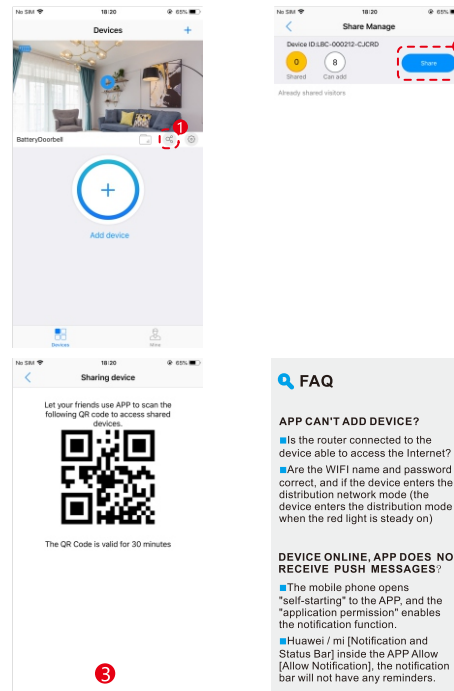
### ●● VIDEO QUERY

Click the "File" icon to view the video in the TF card (Note: the device needs to insert the TF card, turn on the alarm detection and record the video before you can query the video file)



### ●●● DEVICE SHARING

Click the "Share" icon, enter "Share Management", click the "Share" button, your friends can click the "+" of the app to select "Scan Add" to scan the QR code of the sharing device, then share Your device.



### ■ TECHNICAL PARAMETERS

Resolution: 1280\*720

Viewing angle: 160 degrees

WIFI: Support 802.11b/g/n

Audio: two-way audio, echo cancellation

Video: TF card recording

Storage: support 128G Max

Battery: 2pcs 18650 batteries

Power consumption: standby current 200uA

operating current 180mA

#### FAQ

##### APP CAN'T ADD DEVICE?

- Is the router connected to the device able to access the Internet?
- Are the WIFI name and password correct, and if the device enters the distribution network mode (the device enters the distribution mode when the red light is steady on)

##### DEVICE ONLINE, APP DOES NOT RECEIVE PUSH MESSAGES?

- The mobile phone opens "self-starting" to the APP, and the "application permission" enables the notification function.
- Huawei / mi [Notification and Status Bar] inside the APP Allow [Allow Notification], the notification bar will not have any reminders.