

Wi-Fi Plug07

Quick Installation Guideline



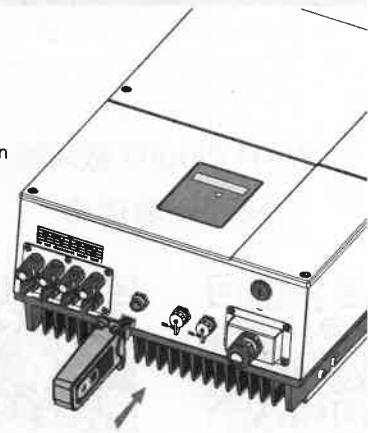
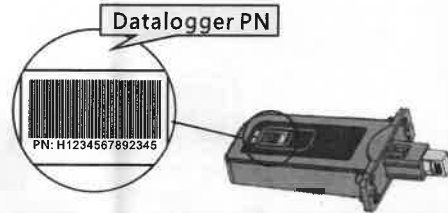
SmartESS(iOS)



SmartESS(Android)

1. Installation

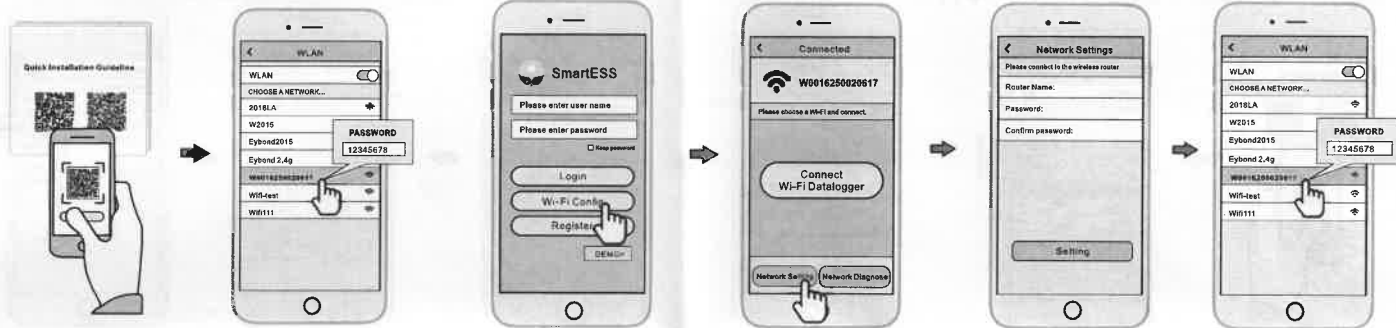
- Align the interface of the Wi-Fi Plug07 with the inverter and plug it in tightly.
- Confirm the status of the LED indicator (When you saw the green LED light turn on from the shell, showing the normal working status).



2. Wireless Router Connection

2.1 Download APP and Wi-Fi connection

- Scan the QR Code from the cover of this guideline and download the APP.
- Select the same number of Wi-Fi Plug07 PN to connect on your phone WLAN. (Initial Password:12345678)



2.2 Wi-Fi Config

- Open the APP, Tap the **Wi-Fi Config** button to enter this page.
- Then tap the **Network Setting** button.

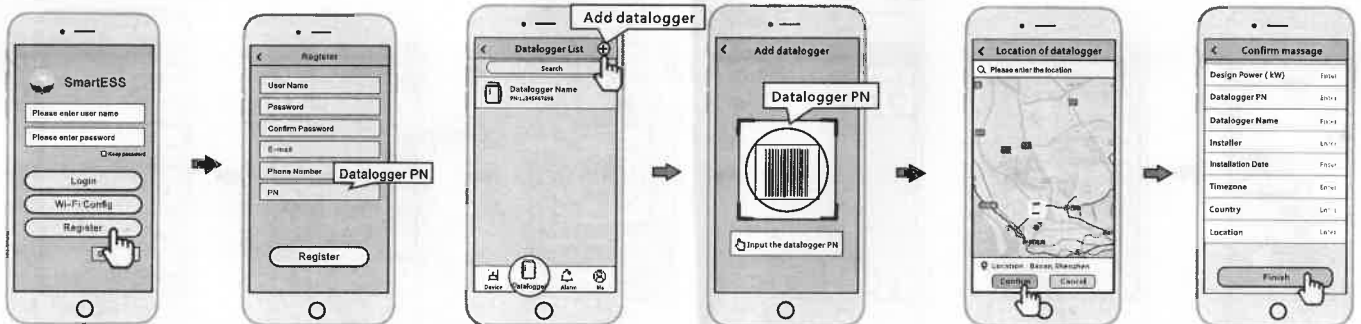
2.3 Network Setting

- According to the prompts, type in the information to finish the network setting.
- After the Wi-Fi Plug07 is restarted, reconnect the Wi-Fi which connected by step 2.1.

3. Create Account And Datalogger

3.1 Create Account

- Open the APP, tap the **Register** button.
- According to the prompt information, complete creating an account.



3.2 Add Datalogger

- Login the account and click the list button on the bottom of the home page.
- Tap the "+" button on the top-right corner of the list page.
- Scan the datalogger PN on the Wi-Fi Plug07, or input it manually.
- According to the prompts, type in the information to finish add datalogger.