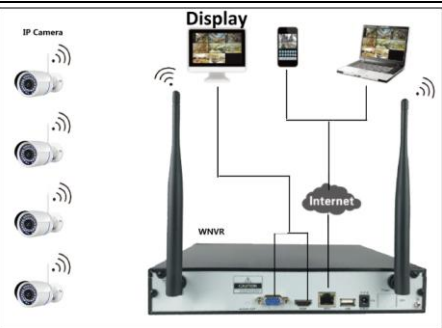


Wireless NVR kit quick operation guide



Available on the App Store
Available on Google play

LIVE REMOTE MONITORING THROUGH SMART PHONES&PCS



Camera (WIPC) Installation

Align the WIPC antenna with the WIPC tail antenna hole and screw them tightly; then install WIPC in suitable monitoring points and electrify (Please try to put the WIPC and WNVR antenna in the correct place as the following picture, in order to get better signal).



04

Method 1: click Toolbar→setup wizard→the last step of setup wizard→select hard disk to be formatted →Format



Method 2: Right-click the screen→Main Menu→General setup →HDD setup→select hard disk to be formatted→Format

On this page, you can see all the information of the hard disk, including model, capacity, state, and format state.

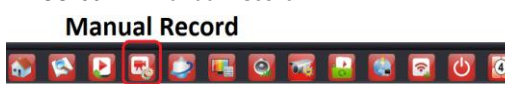
Note: No need to format hard disk if it has already been done in the setting.

08

Motion Detection video recording: Select "Channel Setup" →"Video Detection" → It will trigger when "Detection" type be modified to "motion", then check "Buzzer", "Alarm", "E-Mail Notice" etc. according the demand



Manual Record: 24/7 video recording and recording time can't be changed. Right click →Toolbar→"Manual Record".



12

Chapter 1 Hardware Instruction

Packing List

Please check if the parts are consistent with the below table after opening the package!

Wireless Network video recorder(WNVR)	1 PCS
Power(WNVR)	1PCS,12V/2A
Wireless Camera(WIPC)	4 PCS
Power(WIPC)	4 PCS(12V/1A)
Mouse	1 PCS
Manual	1 PCS
Ethernet cable	1 PCS
HDD screw bag	1 PCS
Camera antenna	4 PCS
Camera accessory bag	4 PCS

HDD installation (Pictures for reference, take the actual articles standard)

01

Note: The WNVR has already installed HDD no need to follow this step.

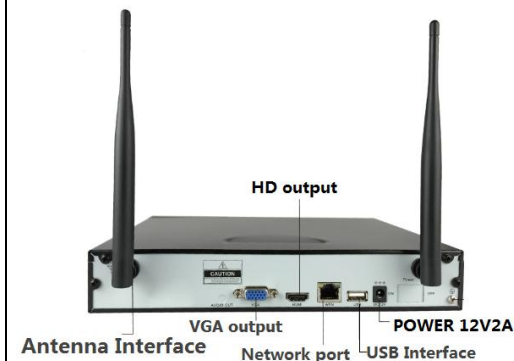


1. Unscrew the screws in the back and the side case, remove the cover.
2. Respectively, connect one end of the hard drive data cable and power cable with the motherboard, and the other end connects with the hard disk.
3. Upside-down the WNVR case, align the screw holes with the bottom holes of the chassis, fix the hard disk with screws.

02

4. Close the cover plate and fix the cover with screws

Interface description (Pictures for reference, take the actual article as standard)



Connection Diagram (Pictures for reference, take the actual article for standard)

03

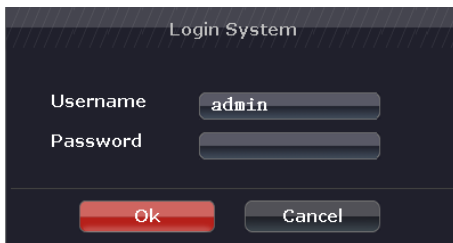
Chapter 2 Product Usage

Please connect the WNVR with external device and electrify according to the connection diagram(Please try to make each WIPC similar distance with the WNVR in order to facilitate signal transmission)

A User Login

Right-click on the system interface, click the main menu icon of the toolbar to enter the user login interface

(default user: admin , password: blank)



05

After entering into main menu ,then can set system admin→user , modify password, add user, modify user authority, etc

("admin" is the undeletable superuser, password can be modified)



B Toolbar Instruction



1. Main menu
2. Setup wizard
3. Video playback
4. Manual record
5. PTZ control
6. Color adjust
7. Volume
8. Video manage

06

9. Video backup
10. Fast network
11. WIFI add
12. Exit system
13. X4 View

C Language Select



Right-click to enter the interface, choose main menu→general setup→language, select the language you need.

D HDD Format

Note: The hard disk must be formatted when be used for the first time

07



E Camera Adding

Note: Normally ignore this procedure as the default setting already accomplished camera installation. This step is only needed when connect with WIPC from non default of the package

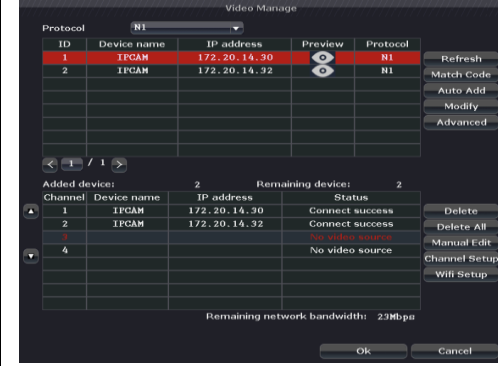


Right-click anywhere of the screen → "Video Manage" to Choose

09

Match Code: Before using wireless transmission between WIPC and WNVR, they need to match the code(match code requires WIPC and WNVR are connected with net cable, remove the cable once code matched; Each WIPC need to be code-matched with the WNVR, which will be done as default step by factory).

Auto Add: The system will search all the wired IPC and code-matched WIPC which are in the local network to re-add to the WNVR.

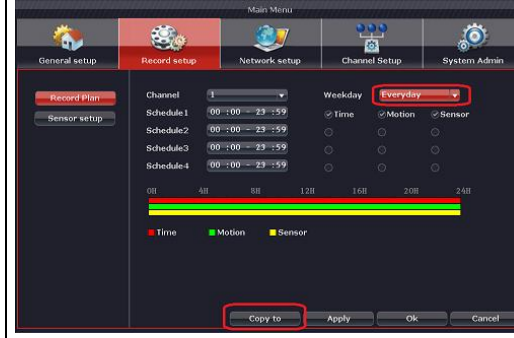


10

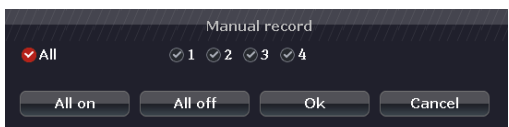
F Recording Setting

Note: The Kit has already been default set to record 24/7 hours, no need to change if without special need.

Recording modes include: Timing recording, Motion detection recording, Manual recording, Alarm-recording 4 types. Each type has different recording mode and shows indicator icons with various colors on the top right. Right-click anywhere of the screen →"Main menu"→"Record setup"→"Record Plan"

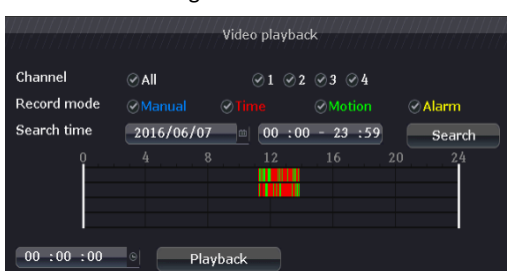


11

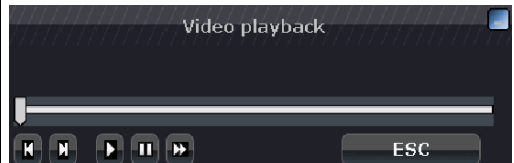


G Video Playback

Toolbar→"Video Playback" →Select "Channel"→Select "Record mode" →Select "Search time" →Click "Search", Click time bar to select the time point you want , →Click "Playback" to see the recording file



13



Playback button: ⏮ Playback previous video, ⏪ Playback Next video, ⏩ Play, ⏸ Pause, ⏹ Fast "x2", "x4", "x8".

H Video Backup

Toolbar→"Video backup" →Click "Search" →Select records you want→Click "Backup" to be ok.(Backup video files is "FLV" format.)

Note: if the WNVR you bought only with 1 USB port, need to use CMS software to backup video by local network. Or use a USB Hub to extend more USB ports and then backup with USB flash disk.

14



Note: Max 32G USB flash disk supported.

Chapter 3 Remote Access

I Network Setting

For the remote access, make sure WNVR connected to the internet and can obtain legal IP address in LAN. Go to "Toolbar" →"Main Menu"→"Network Setting", If not familiar with the network environment, You will be suggested to select "DHCP" directly to get the effective IP address.

15

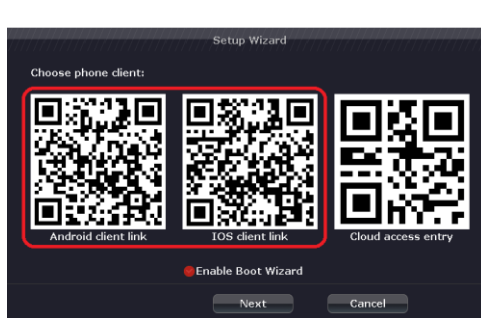


If the user familiar with the network environment, can manually configure IP address and DNS. WNVR will be show online at "network setting" when connected to internet, then can do Remote access.

J Mobile APP Access

Download Mobile APP.

Method 1: open setup wizard, which shows three different QR code, scan the corresponding QR code for Android and iPhone to download and install Mobile APP;



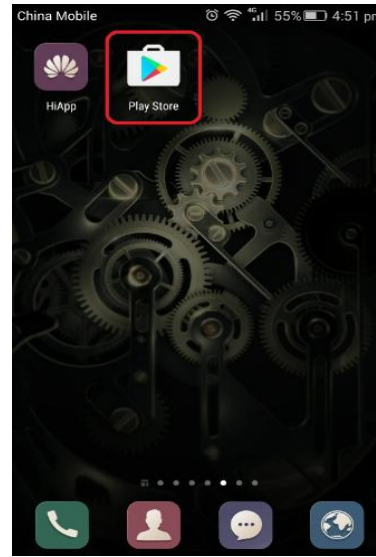
Or enter "Main Menu"—"System Admin"—"System Version" to scan corresponding QR code to download and install Mobile APP;



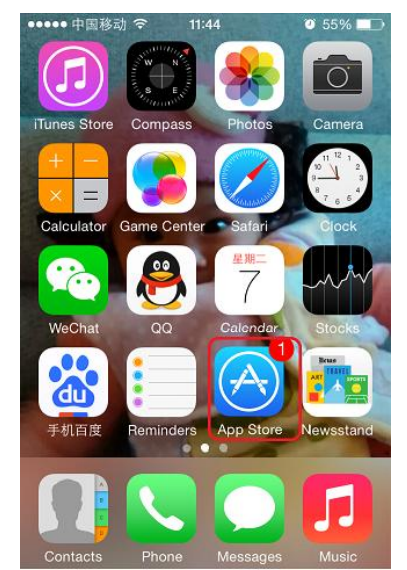
16

17

Method 2: Search "AVEYE" in "Google play" to download for android device; Search "AVEYE" in APP store to download for IOS device.



Android



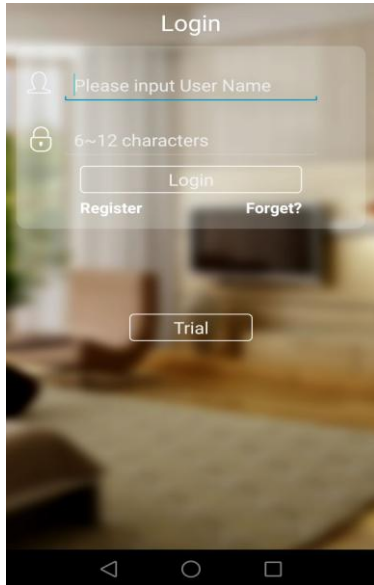
iPhone

Add WNVR device by mobile APP

After installing "AVEYE" and then run it Register account for the first time login.

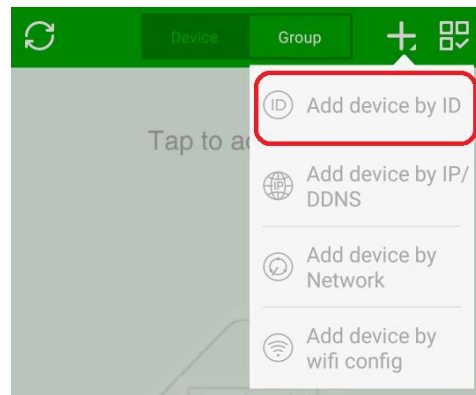
18

19



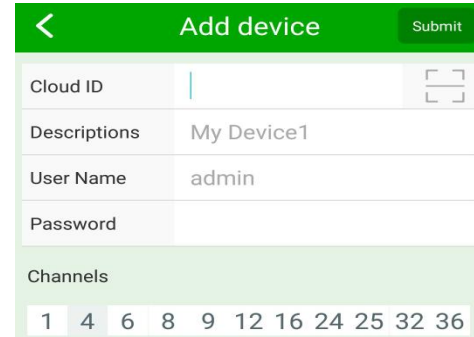
After registered, input user name and password to login. Enter main menu, click the "+" on the top right hand corner

20



Click "Add device by ID" and enter to the adding interface, Input cloud ID or scan QR code directly. Input the wifi WNVR user name, password.

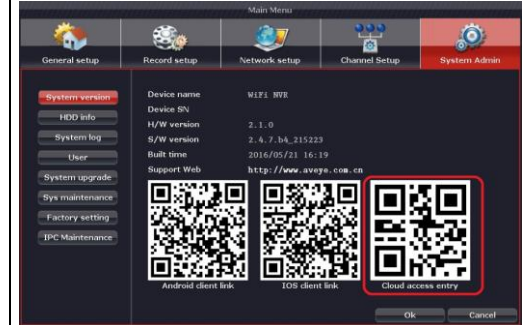
21



Kindly note: you can get Cloud ID from setup wizard or the version page to scan cloud ID QR code



22

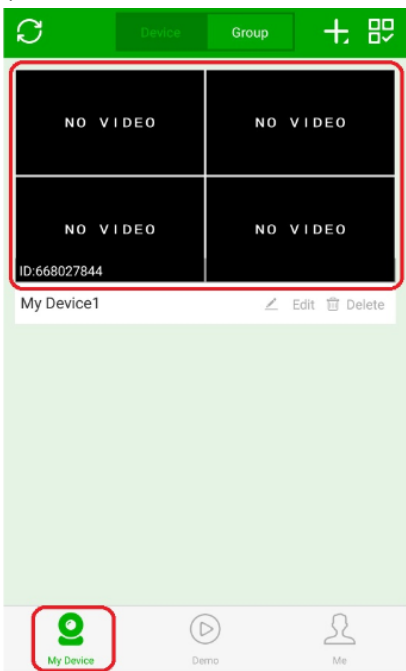


Note: You also could get cloud ID in network setting page.



23

After successfully adding and saving cloud ID, click "My Device" at the bottom of left corner



24

Double click the added device, then you can remote monitoring.

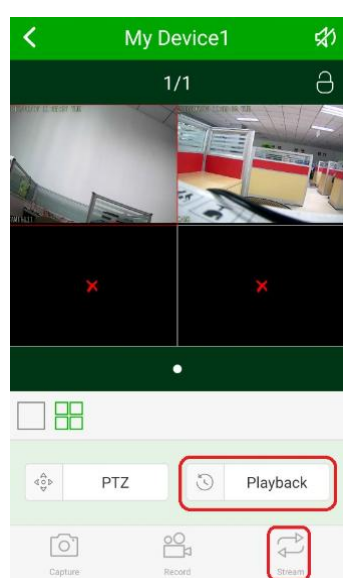


Image quality: according to the Internet speed, you could select clear or

25

smooth two different option to see the video resolution, Click playback, can replay the video file which saved in WNVR HDD.



26

K IE Remote Access

When using computer to access. We can use IE and CMS software to remote access

If view in the Lan. Just enter WNVR ip:192.168.1.X in IE, directly input user name and password. (Download Plug-in when you login for the first time Click download and install. Run plug-in after finish Installation.)

IE view: browse www.aveye.com.cn directly input Cloud ID, user name and password, and then click login



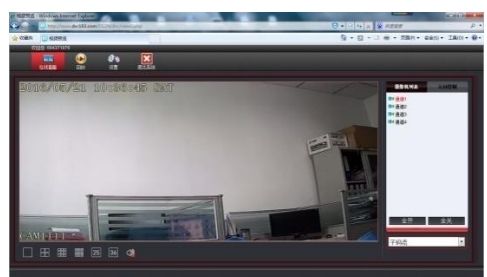
After finishing IE login, you can view by internet (Download plug-in when you login for the first time Click download and install, Run plug-in after finish installation)

27

Note: User name and password is the same as WNVR user name and password



After install plug-in, choose allow to run plug-in.



L CMS Remote Access

Login website: <http://www.aveye.com.cn>, click

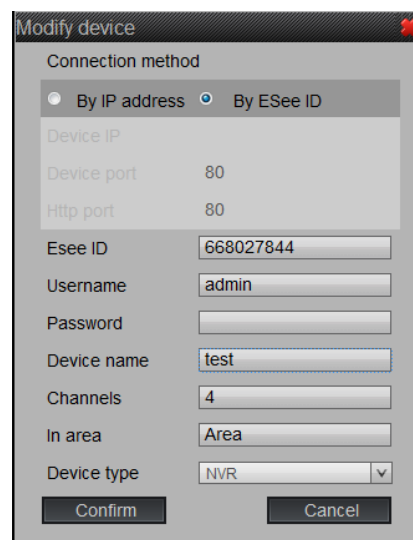
28

"CMS DownLoad" at bottom of right corner of the web page, after CMS are completed installation. Run CMS, enter into interface ---setting ---device manager

Function	Function description
Add	choose device what we need, click(add), let device into device list on the right area.
Quick setup	Select all device to the "area"
Add area	Can add more subsidiary areas, better to divide device by area
Add device	Manual add device, support two connection way (IP address(LAN)&Cloud ID(WAN))
Modify device	"area" right click the device of device list, select "Modify"/"delete" device
Clear devices	Clear all device of the "area" list
Flush	Flush currently device list

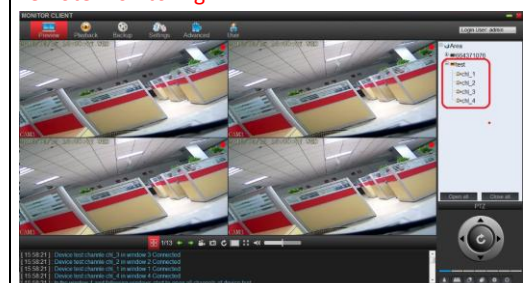
29

Manual add device: support two connection way (IP address(LAN)&Cloud ID(WAN)), please Modify the channels based on current specification type. username, password etc., and "username" is WNVR log in account. Device name " is CMS show name. it can be different, as following picture



30

Note: username, password is for WNVR log in. Select preview after added successfully. double click the device of the right area, then can be remote monitoring



CMS remote playback

Select "playback" on the main interface, double click the device list or point "begin searching" it default show all recording file of that day.

Support local playback and remote playback. Support base on "file type"/date to search, and the file will be show on the underface of progress bar

31